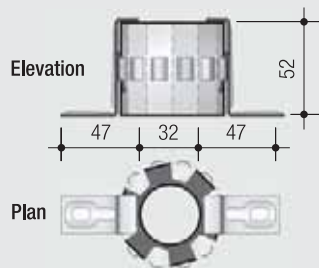
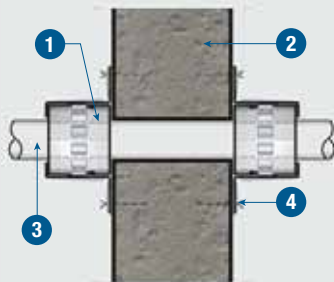


Installation Method



Detail 1 Dimensions



Detail 2 Wall penetration

TECHNICAL DATA

Up to 4 hours fire rating, integrity and insulation in accordance with the criteria of AS 1530: Part 4.

- 1 PROMASEAL^{fi} Conduit Collar
- 2 Concrete, masonry or other fire rated elements
- 3 Conduit pipe with or without cables
- 4 Attachment with suitable anchor
i.e. Steel expanding fasteners or laminating screws

NOTE: Insulation criteria will vary depending up on the pipe size and type and the building element substrate.

PROMASEAL^{fi} Conduit Collars are preformed casings containing Graftex intumescent compound.

This collar is designed for retrofitting around small (<32mm) plastic conduit pipes that pass through fire walls or floor slabs. It comes in one size and can be used on conduits of diameter less than 32mm without modification.

PROMASEAL^{fi} Conduit Collars are packed in boxes of 10 or can be purchased individually.

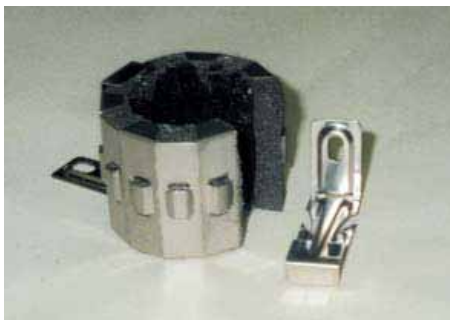
PROMASEAL^{fi} Conduit Collars are used for sealing plastic pipes that pass through fire rated walls or floor slabs. They have been successfully tested to AS 1530: Part 4 and AS 4071: Part 1 for 4 hours.

Installation

Apply PROMASEAL^{fi} Acrylic Sealant to any gap between the pipe and the wall or floor slab through which it passes.

Pull open the collar and wrap around the pipe. Replace the brackets ensuring the prongs are fully engaged in to each end of the casing.

Push the collar hard back to the wall or floor slab and fix with 10g x 40mm laminating screws into plasterboard or 6g x 25mm steel anchors into masonry or concrete. Use 2 fixing points. A collar must be installed on both sides of the wall.



- a) Remove the bracket from the join in the collar and open the collar enough to wrap over the pipe.
- b) Hold the ends of the collar as close as possible together and replace the bracket. Ensure the prongs are fully engaged.
- c) Push the collar tight to the wall and screw with 10 x 40mm laminating screw (for plasterboard) or 6 x 25mm steel anchors in to masonry or concrete floor. Use both fixing points.

Specification

Install PROMASEAL^{fi} Conduit Collar to all plastic conduit pipes that pass through fire rated walls or floors. The collars are to be installed in accordance with the manufacturers instructions. All work must be certified in an approved manner.