

## FWS PROMASEAL® Floor Waste Collar (Low Profile Cast-in Type) Installation Instruction

Floor waste collars help prevent the passage of fire and smoke through openings in compartment floors in the event of a fire. For installation of collars on permanent form work and in thin floor slabs (<150mm) always contact Promat. These collars are available in various models and the type used depends on the certification required for the building.

FWS PROMASEAL® Low Profile Cast-in Floor Waste Collars are designed to provide fire resistance where floor wastes penetrate wet areas. The collars have been tested for cast-in floor applications and when tested to AS1530: Part 4 and AS4072: Part 1 achieved an FRL of -/180/180.

The FWS 100 type is suitable for 100mm uPVC and HDPE pipe. The FWS 80 type is suitable for 80mm uPVC pipe. The FWS 50 type is suitable for 50mm uPVC pipe

Tested slab depth is 150mm.

### Installation Method

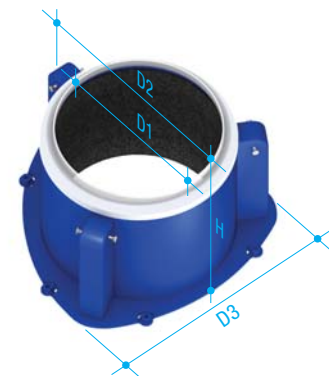
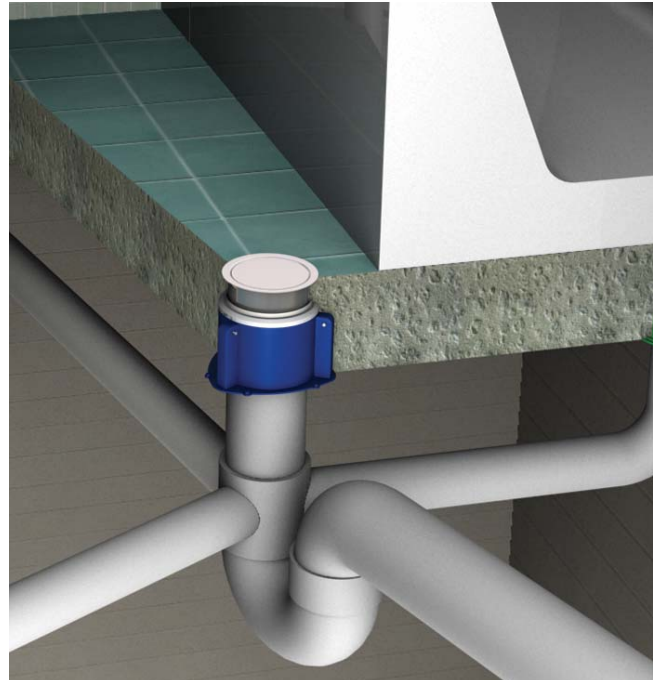
Nail or screw the collar to the formwork through the breakaway holders at the edge of the collar. Cut a piece of the pipe that is the same size as the floor waste and push it firmly into the collar opening until it touches the formwork. You may need to twist the pipe to achieve this.

Ensure that the pipe is cut level and touches the formwork all around and is long enough to protrude above the proposed level of concrete.

The plastic triangular spacer at the bottom of the collar has plastic location points to assist with keeping the pipe in vertical position.

### Typical Specification

Where plastic pipes used for floor wastes are to be fire rated, use FWS PROMASEAL® Low Profile Cast-in Floor Waste Collars as tested to AS1530: Part 4 and AS4072: Part 1 to maintain the required FRL of the element. All details to be in accordance with the manufacturers' instructions. All work to be certified in an approved manner.



### Dimensions Guide

Code no.	uPVC pipe nominal (mm)	HDPE pipe nominal (mm)	Body (mm)		Flange (mm)	
			H	D1	D2	D3
<b>FWS 50</b>	50	–	87	55	125	132
<b>FWS 100</b>	80	–	115	108	186	190
	100	100				

Promat provides a wide range of systems for compartmentation, fire rated air and cable ducts, structural steel protection, fire stopping and partitions.

For assistance with any ProActive Fire Protection problems, contact your local distributor.

#### Promat Asia Pacific Organisations

● AUSTRALIA +61 1800 PROMAT  
● INDIA +91 (11) 2577 8413

● CHINA +86 (20) 8136 1167 / +86 (10) 8589 1254  
● MALAYSIA +60 (3) 2095 8555

● SINGAPORE +65 6776 7635

● HONG KONG +852 2836 3692  
● VIETNAM +84 (8) 931 5964

[www.promat-ap.com](http://www.promat-ap.com)

an **etex** GROUP company

green building council australia  
MEMBER