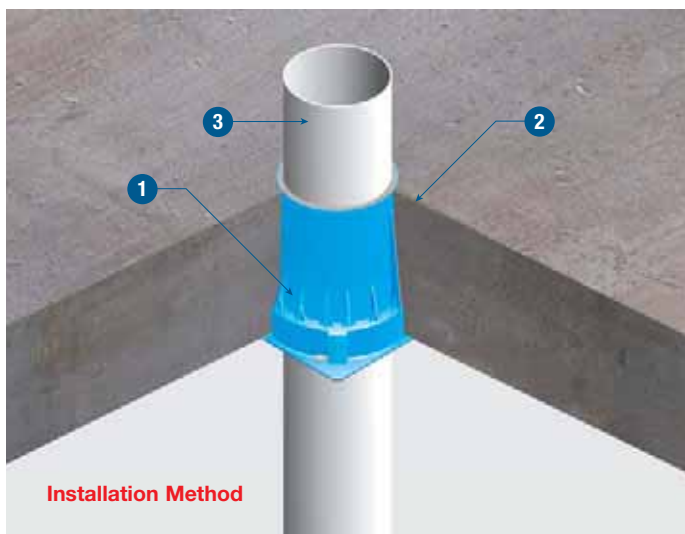
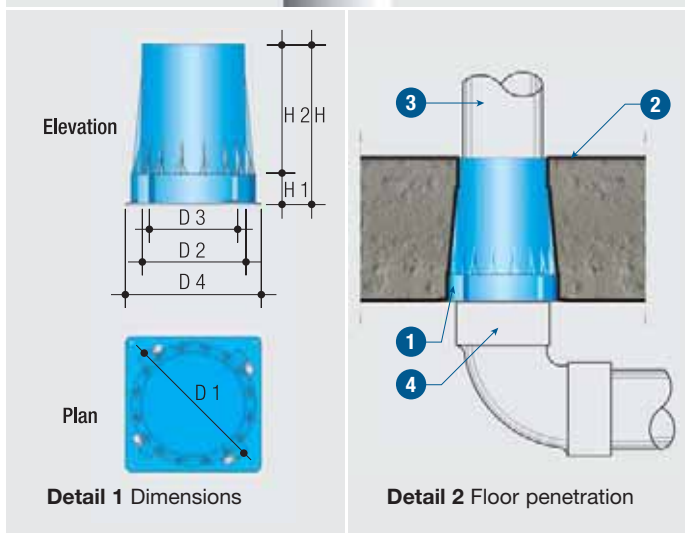


1



Installation Method



Detail 1 Dimensions

Detail 2 Floor penetration

### Installation

The PROMASEAL<sup>fi</sup> Hi-Blu Collars are designed to be fixed to the formwork prior to pouring concrete floor slabs.

The PROMASEAL<sup>fi</sup> Hi-Blu Collars come in 3 sizes: Small for pipes up to nominal 65mm, medium for pipes up to nominal 100mm and large for pipes up to nominal 150mm. Please check with Promat before installing the collars to ensure the size and type of pipe being installed can be used with the particular collar.

This collar accommodates the pipe fitting inside the soffit of the slab enabling space savings to be achieved. The PROMASEAL<sup>fi</sup> Cast-In Collars have been tested for up to 4 hours of FRL in accordance with the criteria of AS 1530: Part 4 and AS 4072: Part 1.

Hi-Blu collars have been tested with various uPVC and HDPE pipe at time of publication of this document. Please check with Promat to ensure each application is tested before installation.

### TECHNICAL DATA

Up to 4 hours fire rating integrity and insulation in accordance with the criteria of AS 1530: Part 4 and AS 4072: Part 1.

- 1 PROMASEAL<sup>fi</sup> Hi-Blu Collar
- 2 Concrete floor
- 3 Plastic piping e.g. Polyethylene PE, Polyvinylchloride PVC
- 4 Joiner inside collar

### Dimensions Guide

Code No.	Body (mm)						Flange plate (mm)
	H	H 1	H 2	D 1	D 2	D 3	
Hi-Blu 65	250	45	205	132	97	95	154
Hi-Blu 100	250	57	193	178	142	140	198
Hi-Blu 150	250	57	193	232	197	194	253

Place the collar onto the formwork. Secure the collar into position with 20mm x 3mm flat head clouts, nailed through the notches provided. DO NOT SKEW THE NAILS.

After the formwork has been stripped and the pipe is ready to be placed into position, knock out the cap from the top of the collar and insert the pipe section through the collar.

NOTE: If the pipe is pushed in from the top, the rubber seal will be forced downwards. Please lift the pipe slightly to ensure that the rubber seal projects upwards.

The gap between the pipe and the collar must be back filled with concrete or commercial grade mortar mix.