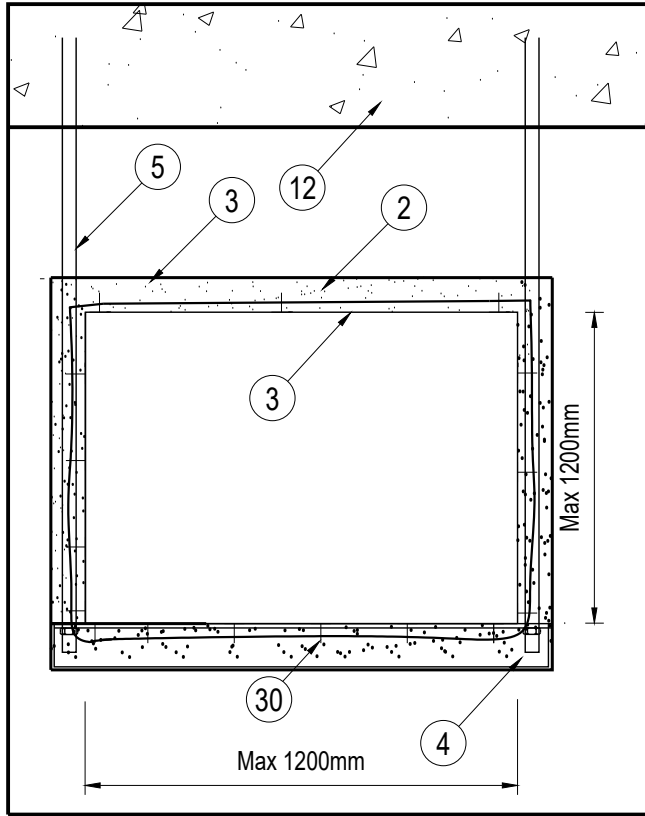


CAFCO[®] 300

Protection of Steel Ducts
Vertical and Horizontal

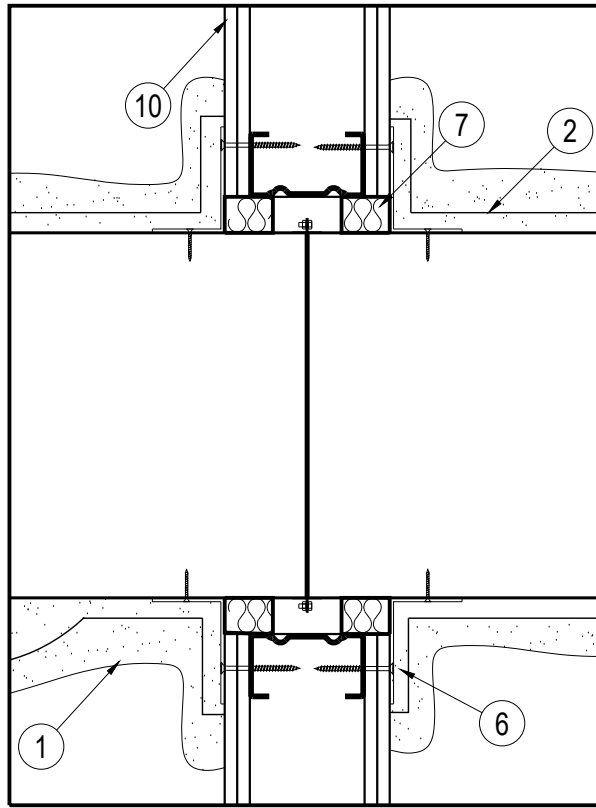
FRL: 120/120/120 (Internal and External Fire)
FRL: 180/180/180 (External Only)

INSTALLATION DRAWINGS



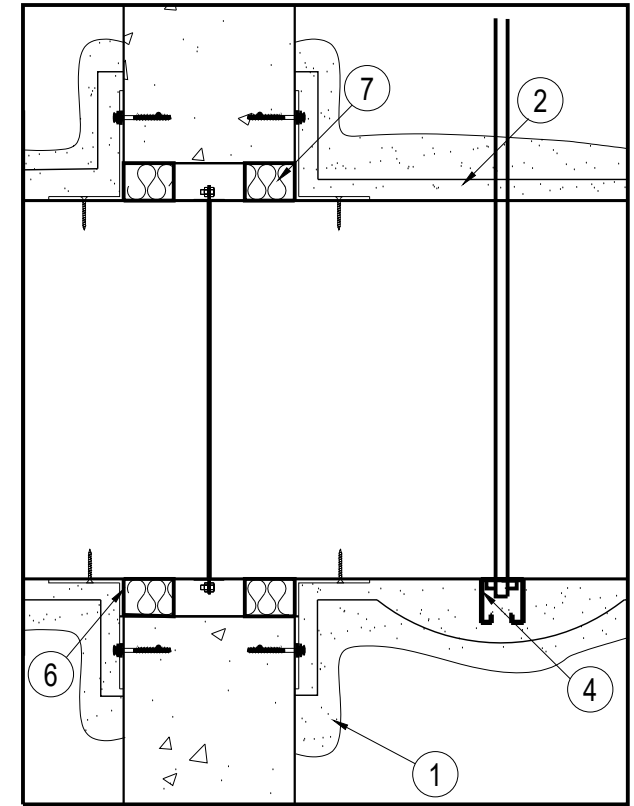
DTL 1 DETAIL VIEW

4 Sided Protection



DTL 2 DETAIL VIEW

Lightweight Wall Penetration



DTL 3 DETAIL VIEW

Masonry / Concrete Wall Penetration

Drawing / Project Title :

CAFCO300 - Duct System
Section - 4 Sided
+ Wall Penetrations

Date :

14-04-2023

Scale :

N.T.S. (mm)

Revision :

-

Date :

-

No. :

-

NOTICE :

This information is intended for engineering purposes only and is based on internal & third party testing which we believe to be accurate. The user must determine the suitability of the design to the application and the product to local building codes. Since the user of the product is beyond Promat's control, PromatAustralia.'s only responsibility shall be to refund or replace materials found to be defective as per our standard warranty.

NOTE : ALL DIMENSIONS ARE IN MM

Promat

www.promat.com

PROMAT AUSTRALIA

Drawing No. :
PB185

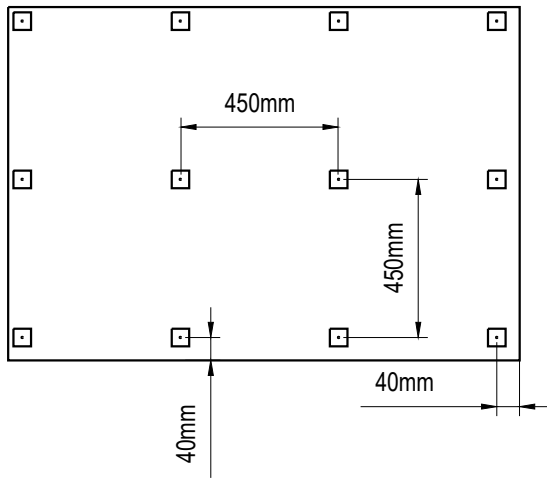
Sheet No. :
02

Codes :
CF43-12

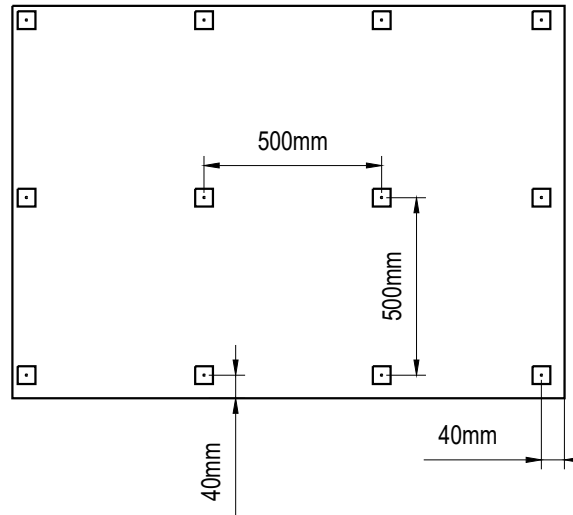
Drawn By :
PB

Checked By :

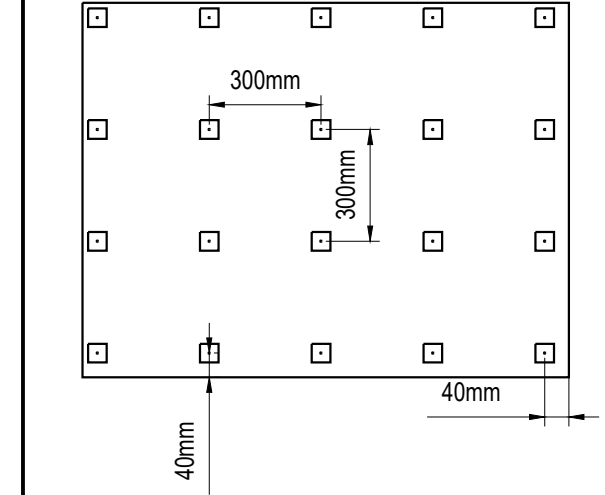
☒ **ASSESSMENT DRAWING**
☐ **PROJECT DRAWING**



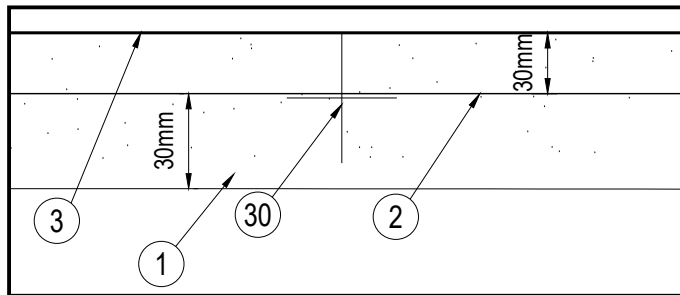
DTL 1 **DETAIL VIEW**
Pin Set Out - Duct Sides



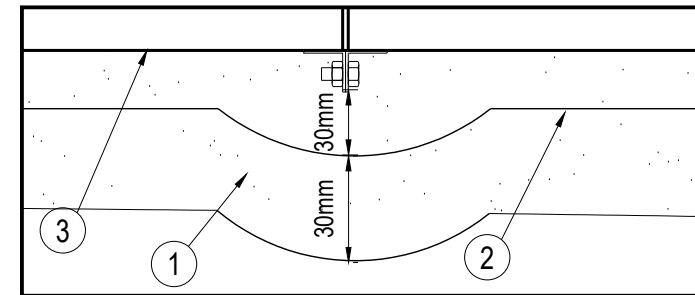
DTL 2 **DETAIL VIEW**
Pin Set Out - Duct Top



DTL 3 **DETAIL VIEW**
Pin Set Out - Duct Underside



DTL 4 **DETAIL VIEW**
Mesh Setup



DTL 5 **DETAIL VIEW**
Mesh Setup - Duct Flange

Drawing / Project Title : CAFCO300 - Duct System Mesh Pin Layouts			Date : 14-04-2023	Scale : N.T.S. (mm)	Revision : -	Date : -	No. : -	NOTICE : This information is intended for engineering purposes only and is based on internal & third party testing which we believe to be accurate. The user must determine the suitability of the design to the application and the product to local building codes. Since the user of the product is beyond Promat's control, Promat International (Asia Pacific) Ltd.'s only responsibility shall be to refund or replace materials found to be defective as per our standard warranty.	<div>Promat</div> <div>www.promat.com</div> <div>PROMAT AUSTRALIA</div>
			Test Standard : AS 1530: PART 4	Base On Report No. : FAS230196					
Drawing No. : PB185	Sheet No. : 03	Codes : CF43-12	Drawn By : PB	Checked By :	<input checked="" type="checkbox"/> ASSESSMENT DRAWING <input type="checkbox"/> PROJECT DRAWING				

NOTE : ALL DIMENSIONS ARE IN MM

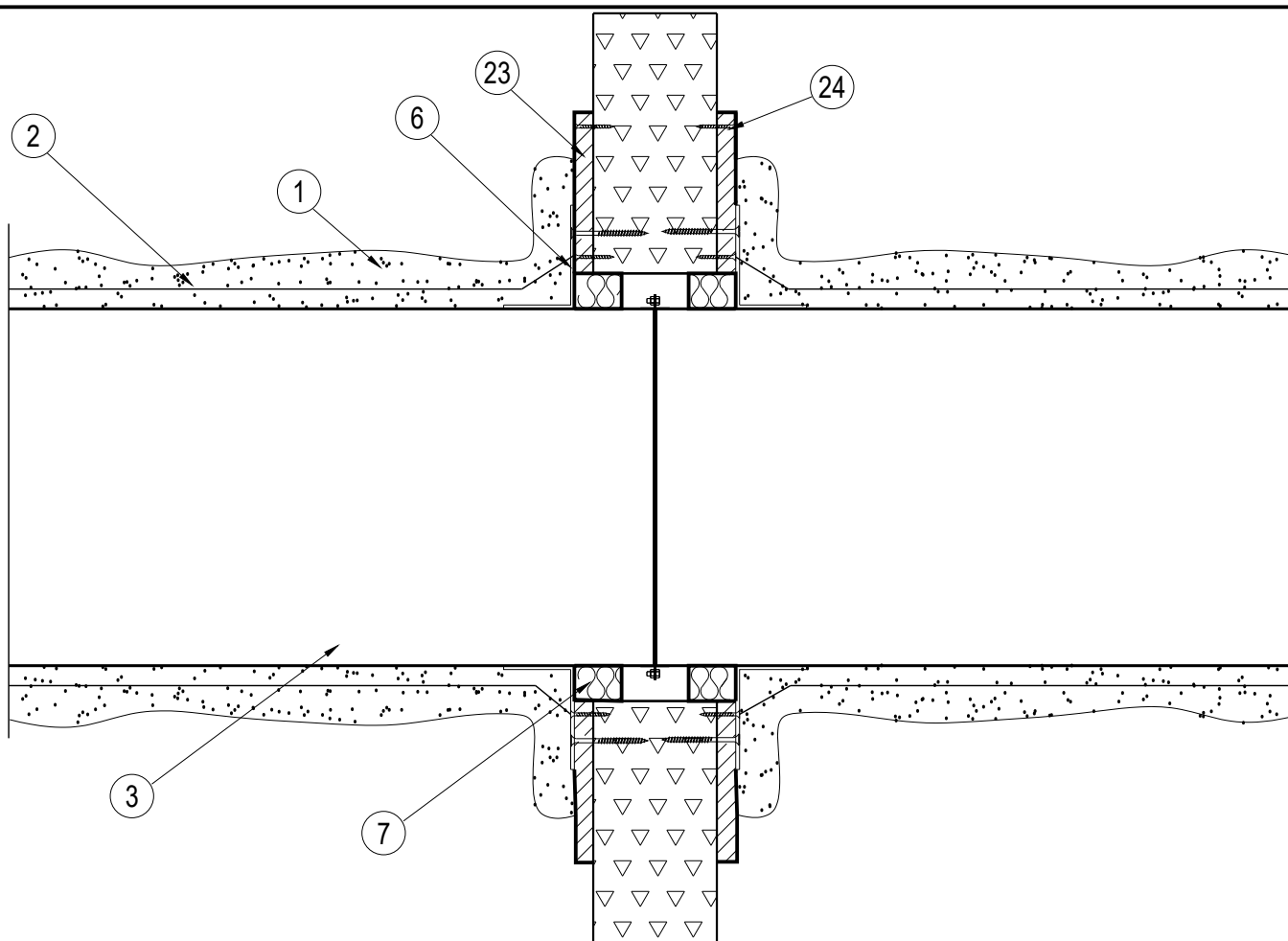


FIG. 1 **SECTION VIEW**
Speedpanel / AAC Penetration

Drawing / Project Title : CAFCO300 - Duct System SPEEDPANEL / AAC Wall Penetration			Date : 5/6/23	Scale : N.T.S. (mm)	Revision : -	Date : -	No. : -	NOTICE : This information is intended for engineering purposes only and is based on internal & third party testing which we believe to be accurate. The user must determine the suitability of the design to the application and the product to local building codes. Since the user of the product is beyond Promat's control, Promat International (Asia Pacific) Ltd.'s only responsibility shall be to refund or replace materials found to be defective as per our standard warranty.	<div>Promat</div> www.promat.com
			Test Standard : AS 1530: PART 4	Base On Report No. : FAS230196					
			Drawing No. : PB185	Sheet No. : 04	Codes : CF-43-12	Drawn By : PB	Checked By : IA		
NOTE : ALL DIMENSIONS ARE IN MM									PROMAT AUSTRALIA

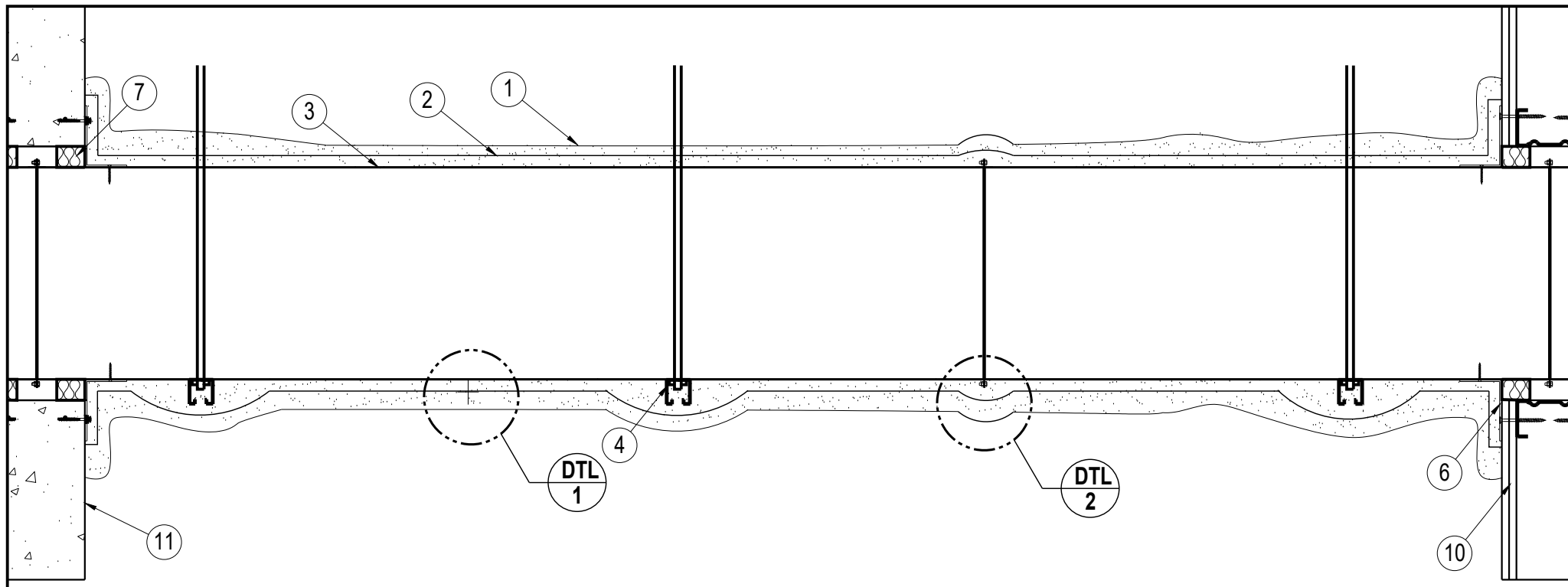
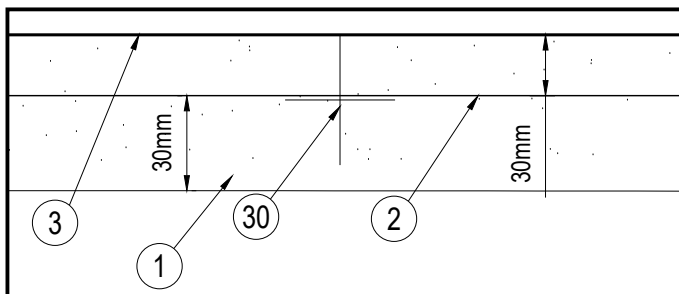
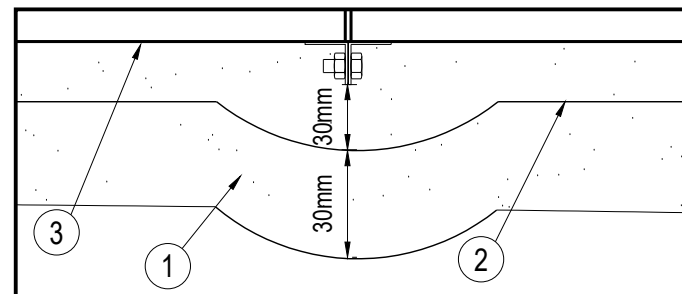


FIG. 1 ELEVATION
4 SIDED APPLICATION



DTL 1
DETAIL VIEW
Mesh Setup



DTL 2
DETAIL VIEW
Mesh Setup - Duct Flange

Drawing / Project Title : CAFCO300 - Duct System ELEVATION - 4 Sided			Date : 14/4/23	Scale : N.T.S. (mm)	Revision : -	Date : -	No. : -	NOTICE : This information is intended for engineering purposes only and is based on internal & third party testing which we believe to be accurate. The user must determine the suitability of the design to the application and the product to local building codes. Since the user of the product is beyond Promat's control, Promat International (Asia Pacific) Ltd.'s only responsibility shall be to refund or replace materials found to be defective as per our standard warranty.	<div>Promat</div> <div>www.promat.com</div> <div>PROMAT AUSTRALIA</div>
			Test Standard : AS 1530: PART 4	Base On Report No. : FAS230196					
Drawing No. : PB185	Sheet No. : 05	Codes : CF43-12	Drawn By : PB	Checked By :	<div><input checked="" type="checkbox"/> ASSESSMENT DRAWING</div> <div><input type="checkbox"/> PROJECT DRAWING</div>				

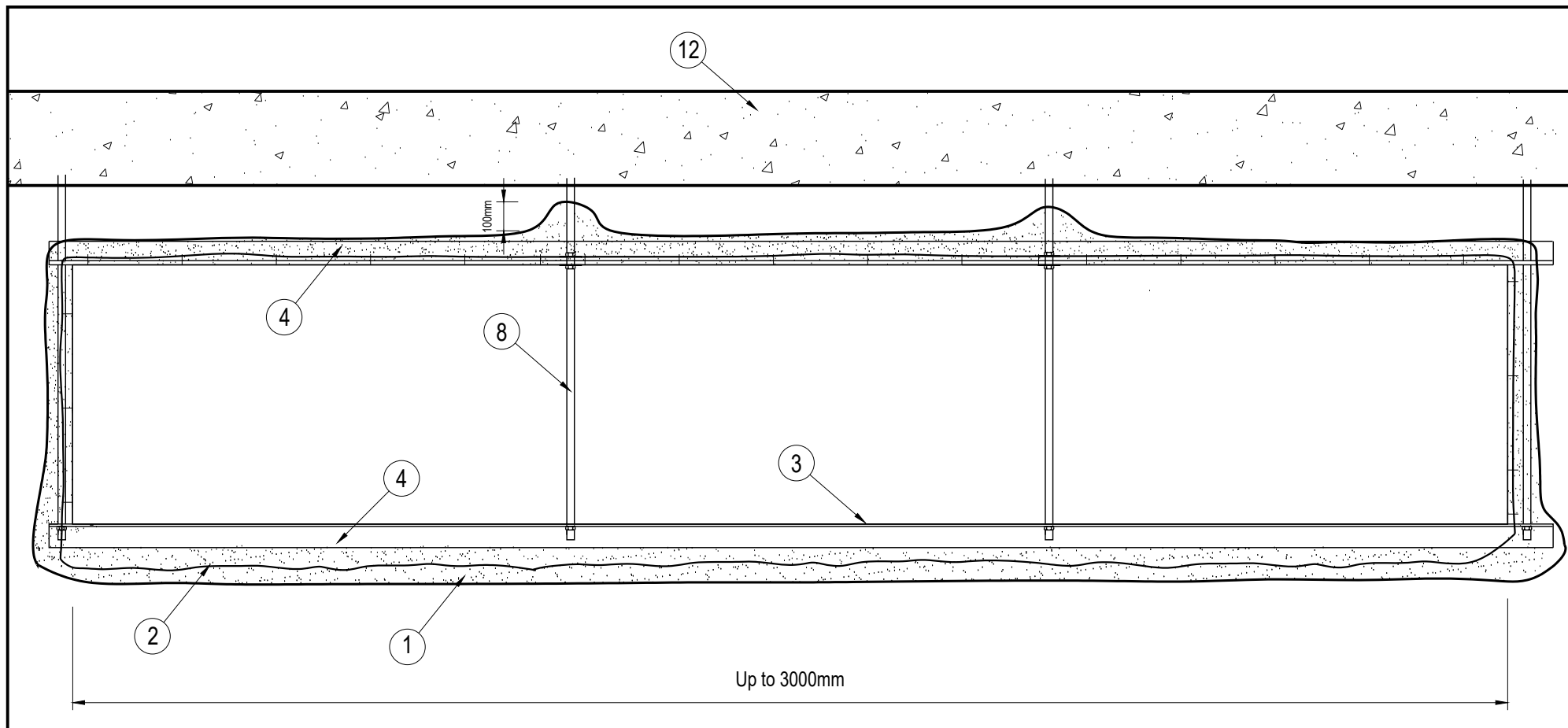


FIG. 1 **SECTION VIEW**
WIDE SINGLE DUCT

Drawing / Project Title : CAFCO300 - Duct System Single Wide Duct Installation			Date : 14/4/23	Scale : N.T.S. (mm)	Revision : -	Date : -	No. : -	NOTICE : This information is intended for engineering purposes only and is based on internal & third party testing which we believe to be accurate. The user must determine the suitability of the design to the application and the product to local building codes. Since the user of the product is beyond Promat's control, Promat International (Asia Pacific) Ltd.'s only responsibility shall be to refund or replace materials found to be defective as per our standard warranty.	<div>Promat</div> <div>www.promat.com</div> <div>PROMAT AUSTRALIA</div>
			Test Standard : AS 1530: PART 4	Base On Report No. : FAS230196					
Drawing No. : PB185	Sheet No. : 06	Codes : CF-43-12	Drawn By : PB	Checked By : IA	<input checked="" type="checkbox"/> ASSESSMENT DRAWING <input type="checkbox"/> PROJECT DRAWING			NOTE : ALL DIMENSIONS ARE IN MM	

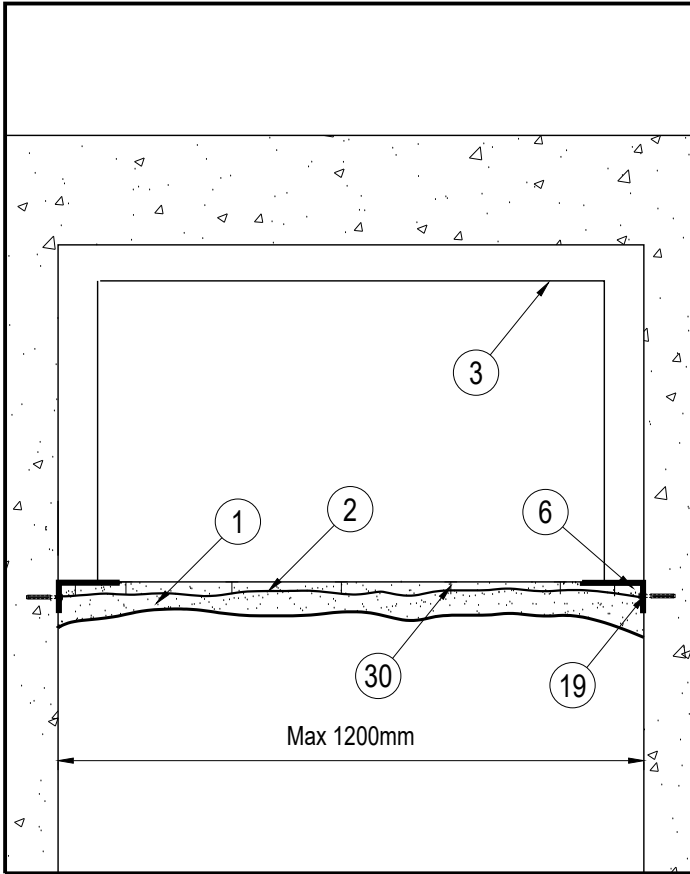


FIG. 1 SECTION VIEW
1 SIDED APPLICATION

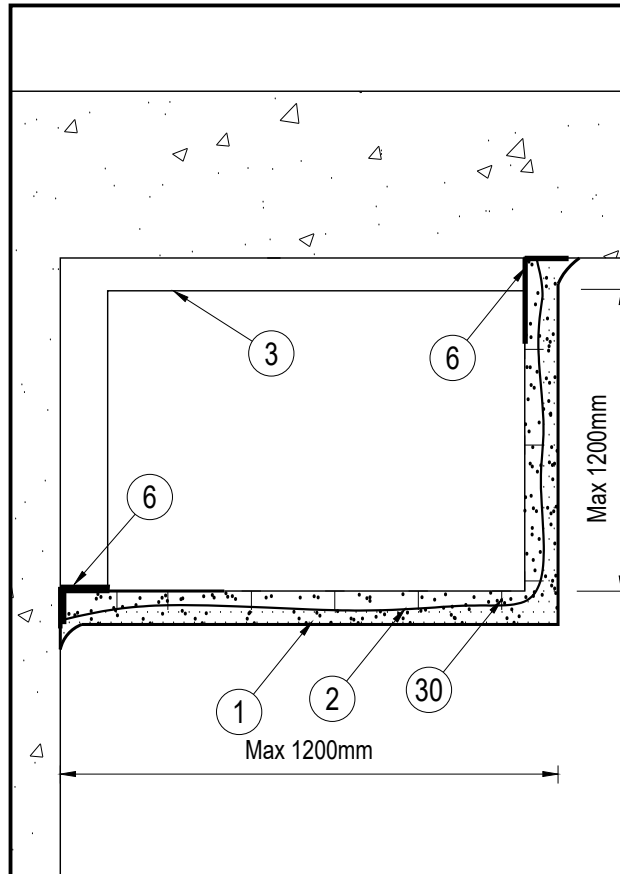


FIG. 2 SECTION VIEW
2 SIDED APPLICATION

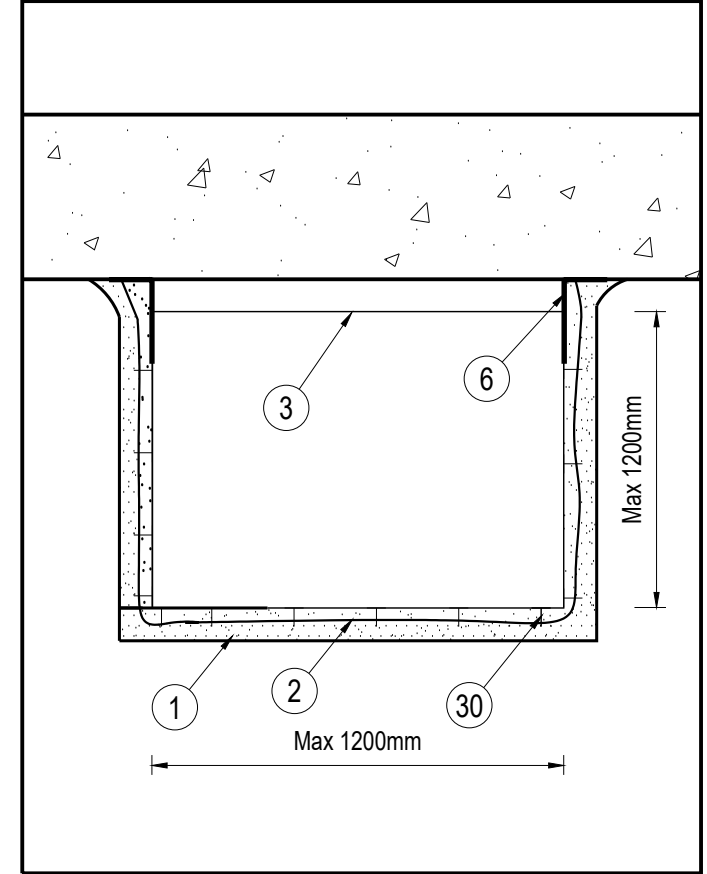


FIG. 3 SECTION VIEW
3 SIDED APPLICATION

Drawing / Project Title : CAFCO300 - Duct System Section - 1,2 & 3 Sided			Date : 14-04-2023	Scale : N.T.S. (mm)	Revision : -	Date : -	No. : -	NOTICE : This information is intended for engineering purposes only and is based on internal & third party testing which we believe to be accurate. The user must determine the suitability of the design to the application and the product to local building codes. Since the user of the product is beyond Promat's control, Promat International (Asia Pacific) Ltd.'s only responsibility shall be to refund or replace materials found to be defective as per our standard warranty.	<div>Promat</div> <div>www.promat.com</div> <div>PROMAT AUSTRALIA</div>
			Test Standard : AS 1530: PART 4	Base On Report No. : FAS230196					
			Drawing No. : PB185	Sheet No. : 07	Codes : CF43-12	Drawn By : PB	Checked By :		
NOTE : ALL DIMENSIONS ARE IN MM									

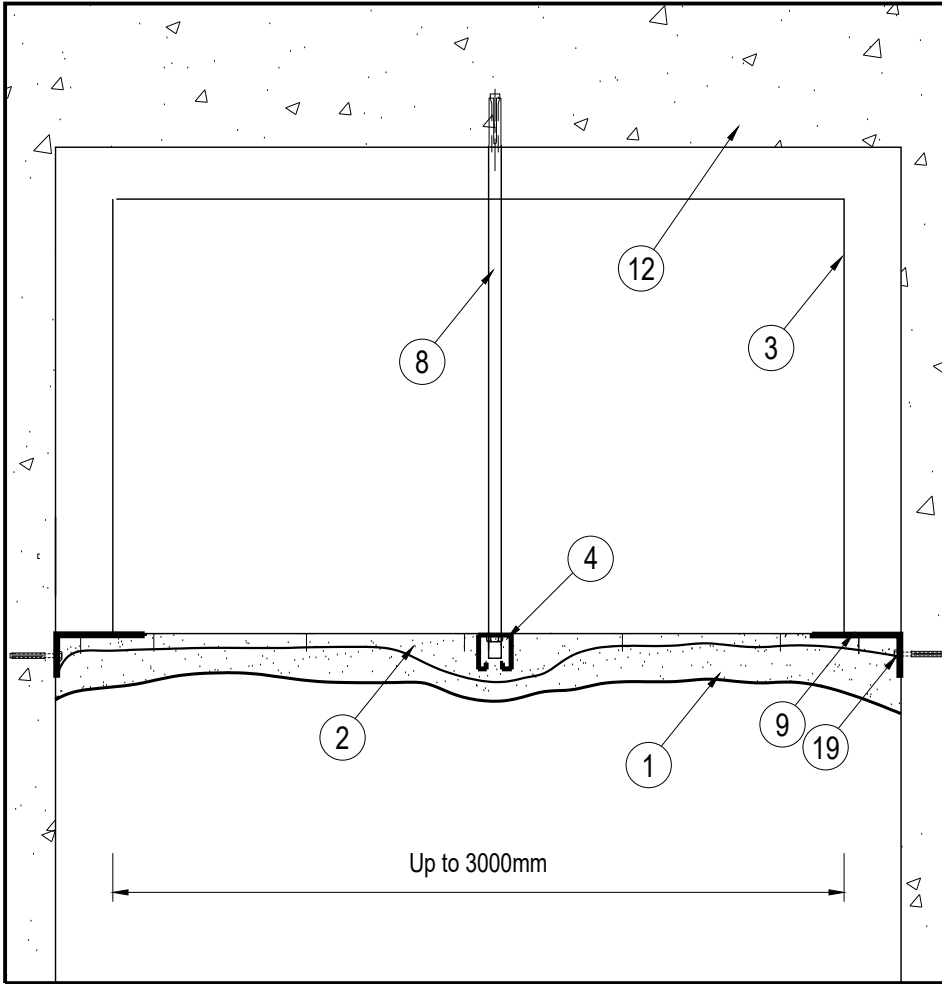


FIG. 1 SECTION VIEW
1 SIDED APPLICATION

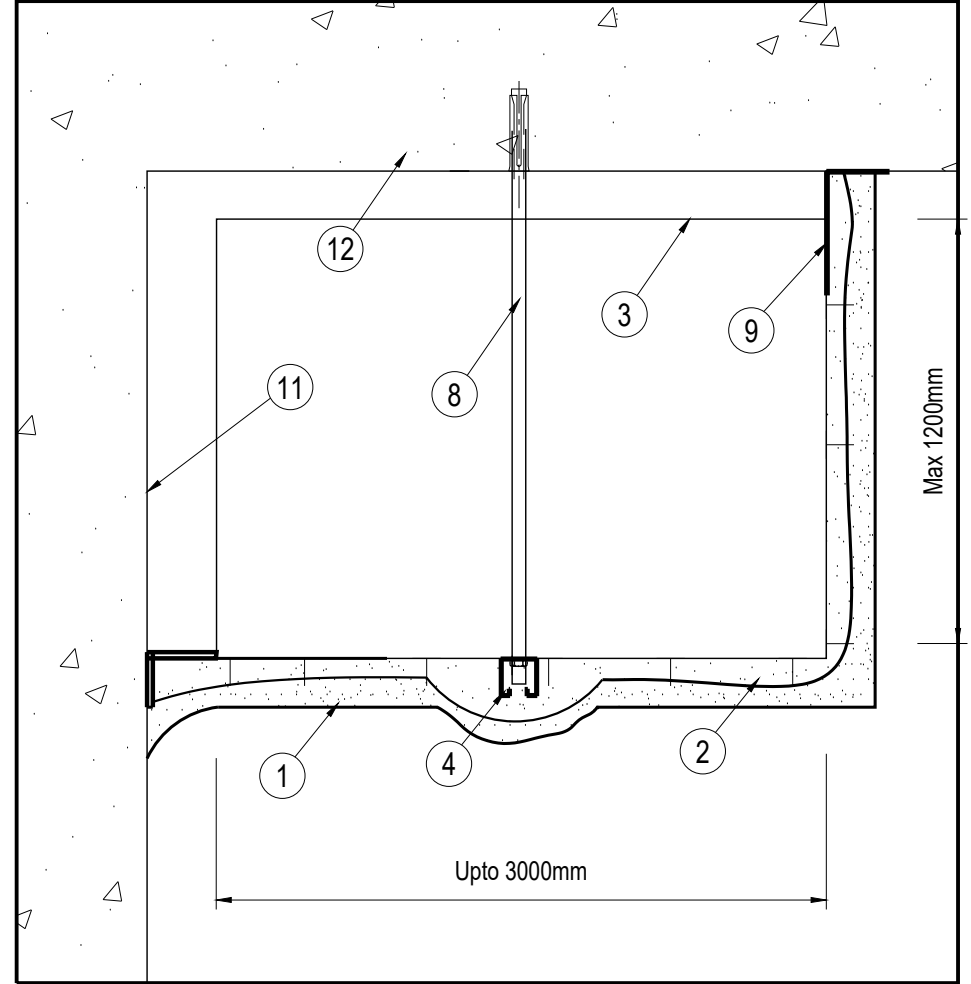


FIG. 2 SECTION VIEW
2 SIDED APPLICATION

Drawing / Project Title : CAFCO300 - Duct System Section - 1 & 2 Sided - Wide Ducts			Date : 05-06-2023	Scale : N.T.S. (mm)	Revision : -	Date : -	No. : -	NOTICE : This information is intended for engineering purposes only and is based on internal & third party testing which we believe to be accurate. The user must determine the suitability of the design to the application and the product to local building codes. Since the user of the product is beyond Promat's control, Promat International (Asia Pacific) Ltd.'s only responsibility shall be to refund or replace materials found to be defective as per our standard warranty.	<div>Promat</div> www.promat.com
			Test Standard : AS 1530: PART 4	Base On Report No. : FAS230196					
Drawing No. : PB185	Sheet No. : 08	Codes : CF43-12	Drawn By : PB	Checked By :	<input checked="" type="checkbox"/> ASSESSMENT DRAWING <input type="checkbox"/> PROJECT DRAWING			NOTE : ALL DIMENSIONS ARE IN MM	PROMAT AUSTRALIA

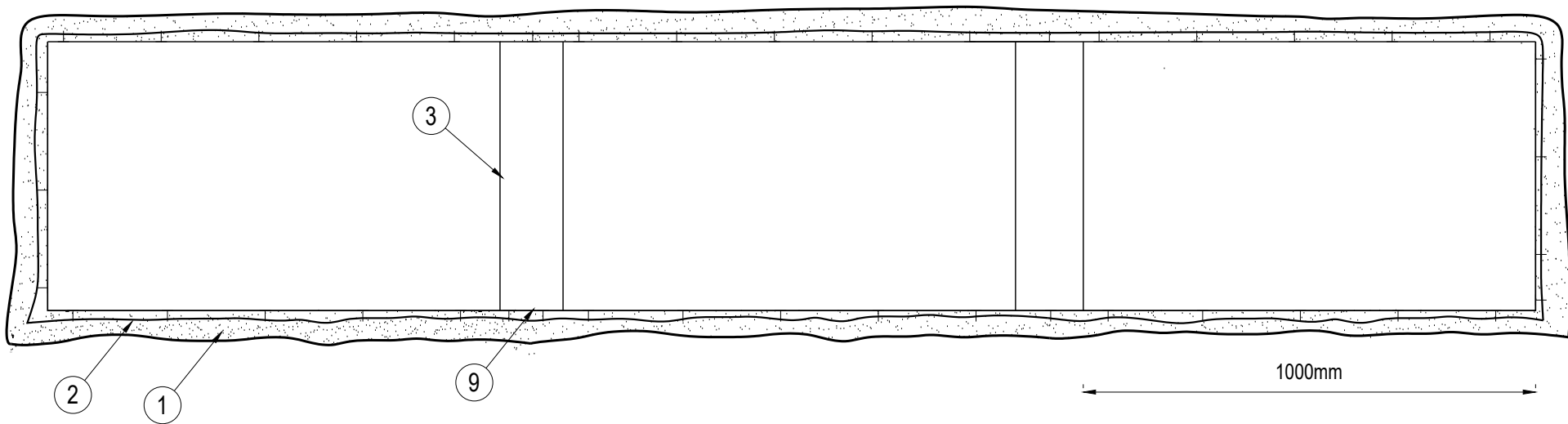


FIG. 1 **SECTION VIEW**
Multiple Duct Installation

Drawing / Project Title : CAFCO300 - Duct System Multiple Duct Installation			Date : 14-04-2023	Scale : N.T.S. (mm)	Revision : -	Date : -	No. : -	NOTICE : This information is intended for engineering purposes only and is based on internal & third party testing which we believe to be accurate. The user must determine the suitability of the design to the application and the product to local building codes. Since the user of the product is beyond Promat's control, Promat International (Asia Pacific) Ltd.'s only responsibility shall be to refund or replace materials found to be defective as per our standard warranty.	<div>Promat</div> <div>www.promat.com</div> <div>PROMAT AUSTRALIA</div>
			Test Standard : AS 1530: PART 4	Base On Report No. : FAS230196					
Drawing No. : PB185	Sheet No. : 09	Codes : CF43-12	Drawn By : PB	Checked By :	<input checked="" type="checkbox"/> ASSESSMENT DRAWING <input type="checkbox"/> PROJECT DRAWING			NOTE : ALL DIMENSIONS ARE IN MM	

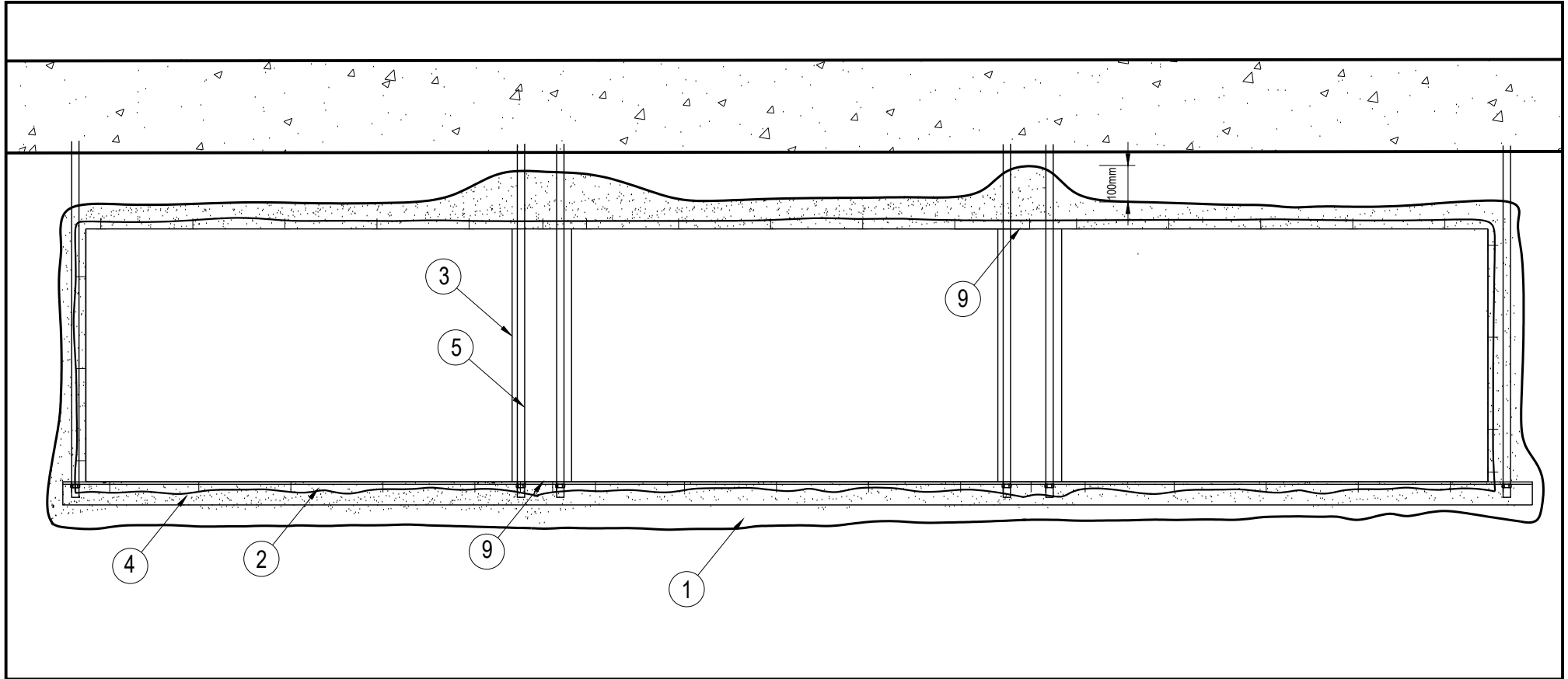


FIG. 1 SECTION VIEW
Multiple Duct Installation with supports

Drawing / Project Title : CAFCO300 - Duct System Multiple Duct Installation			Date : 14-04-2023	Scale : N.T.S. (mm)	Revision : -	Date : -	No. : -	NOTICE : This information is intended for engineering purposes only and is based on internal & third party testing which we believe to be accurate. The user must determine the suitability of the design to the application and the product to local building codes. Since the user of the product is beyond Promat's control, Promat International (Asia Pacific) Ltd.'s only responsibility shall be to refund or replace materials found to be defective as per our standard warranty.	Promat www.promat.com PROMATAUSTRALIA
			Test Standard : AS 1530: PART 4	Base On Report No. : FAS230196					
Drawing No. : PB185	Sheet No. : 10	Codes : CF43-12	Drawn By : PB	Checked By :	<input checked="" type="checkbox"/> ASSESSMENT DRAWING <input type="checkbox"/> PROJECT DRAWING			NOTE : ALL DIMENSIONS ARE IN MM	

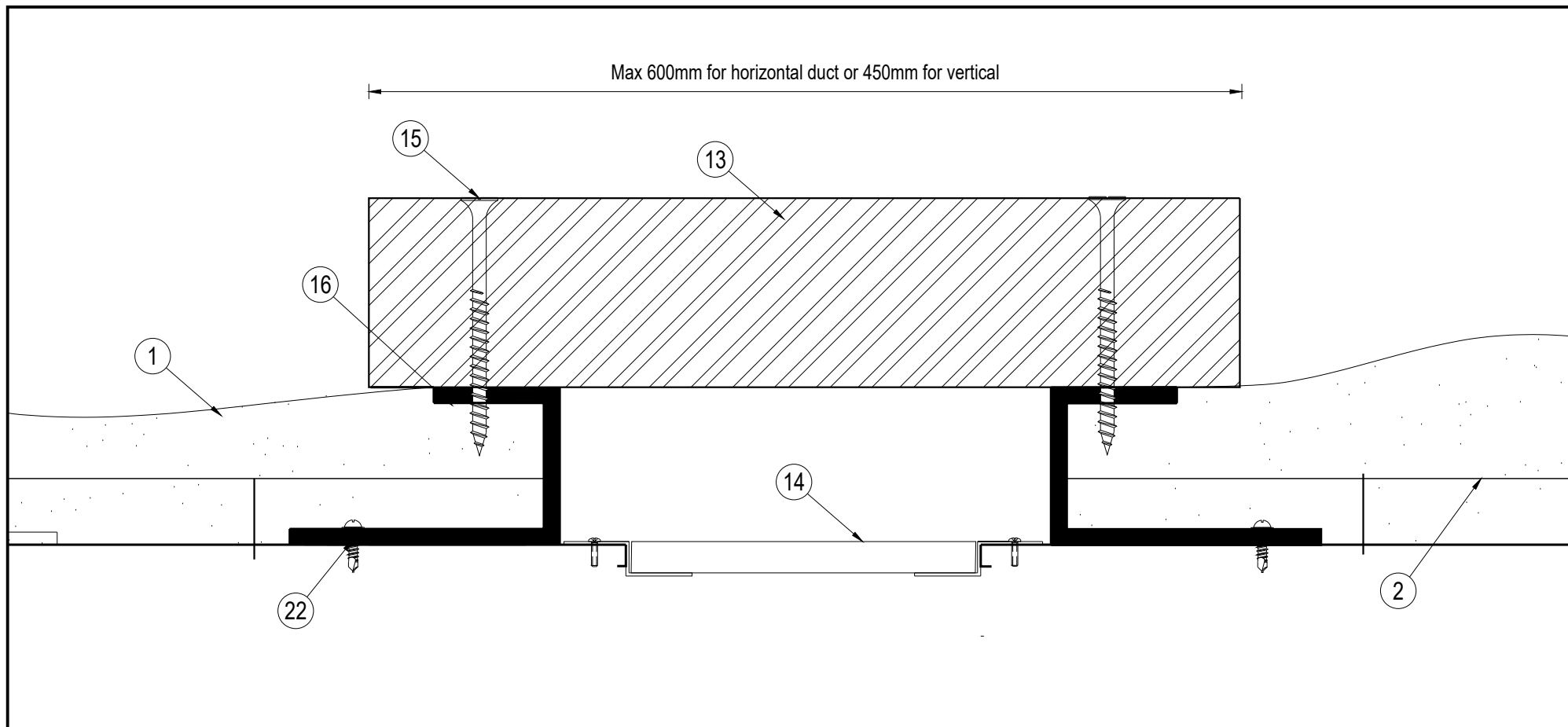


FIG. 1 **SECTION VIEW**
ACCESS PANEL

Drawing / Project Title : CAFCO300 - Duct System Access Panel Installation			Date : 14/4/23	Scale : N.T.S. (mm)	Revision : -	Date : -	No. : -	NOTICE : This information is intended for engineering purposes only and is based on internal & third party testing which we believe to be accurate. The user must determine the suitability of the design to the application and the product to local building codes. Since the user of the product is beyond Promat's control, Promat International (Asia Pacific) Ltd.'s only responsibility shall be to refund or replace materials found to be defective as per our standard warranty.	<div>Promat</div> <div>www.promat.com</div> <div>PROMAT AUSTRALIA</div>
			Test Standard : AS 1530: PART 4	Base On Report No. : FAS230196					
Drawing No. : PB185	Sheet No. : 11	Codes : CF-43-12	Drawn By : PB	Checked By : IA	<input checked="" type="checkbox"/> ASSESSMENT DRAWING <input type="checkbox"/> PROJECT DRAWING			NOTE : ALL DIMENSIONS ARE IN MM	

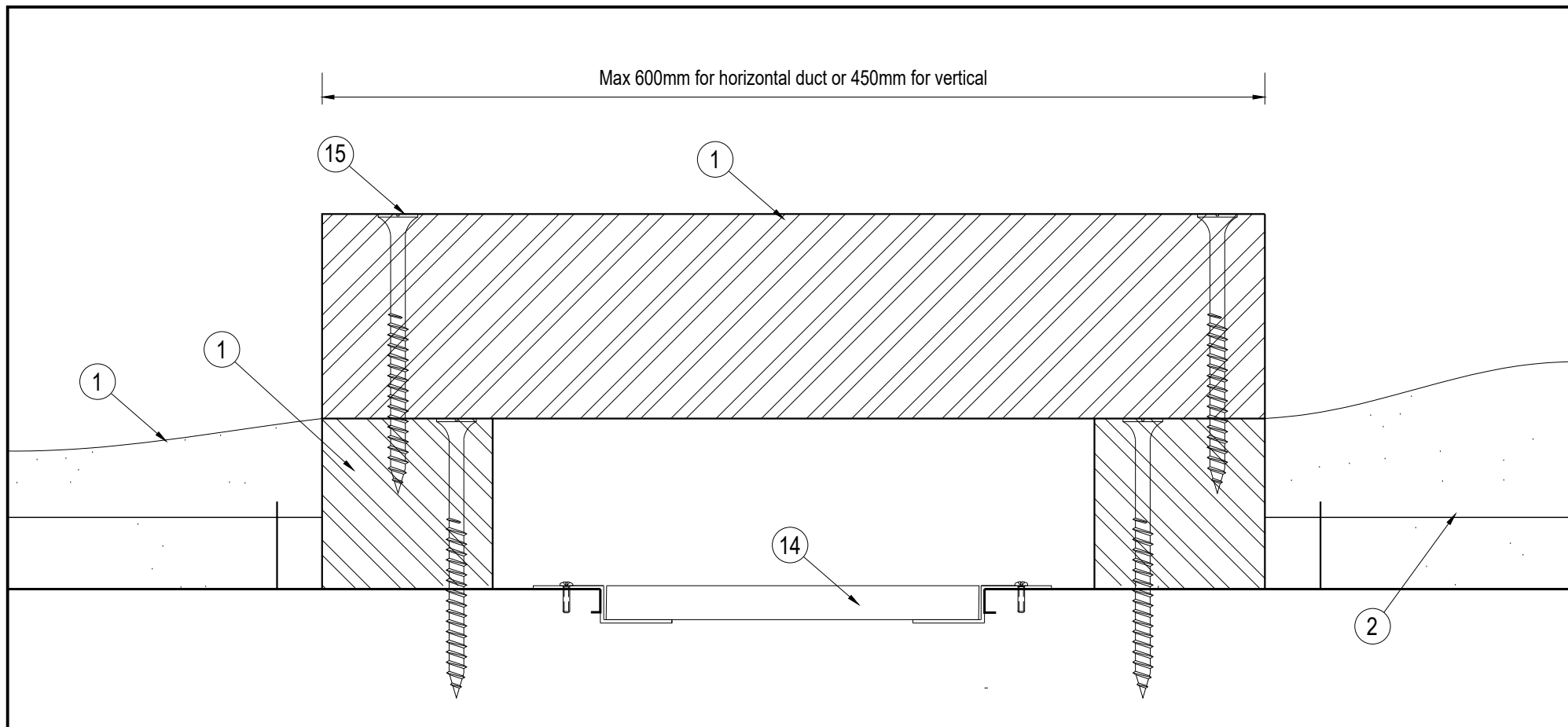


FIG. 1 **SECTION VIEW**
ACCESS PANEL

Drawing / Project Title : CAFCO300 - Duct System Access Panel Board Frame Installation			Date : 14/4/23	Scale : N.T.S. (mm)	Revision : -	Date : -	No. : -	NOTICE : This information is intended for engineering purposes only and is based on internal & third party testing which we believe to be accurate. The user must determine the suitability of the design to the application and the product to local building codes. Since the user of the product is beyond Promat's control, Promat International (Asia Pacific) Ltd.'s only responsibility shall be to refund or replace materials found to be defective as per our standard warranty.	<div>Promat</div> <div>www.promat.com</div> <div>PROMAT AUSTRALIA</div>
			Test Standard : AS 1530: PART 4	Base On Report No. : FAS230196					
Drawing No. : PB185	Sheet No. : 12	Codes : CF-43-12	Drawn By : PB	Checked By : IA	<input checked="" type="checkbox"/> ASSESSMENT DRAWING <input type="checkbox"/> PROJECT DRAWING			NOTE : ALL DIMENSIONS ARE IN MM	

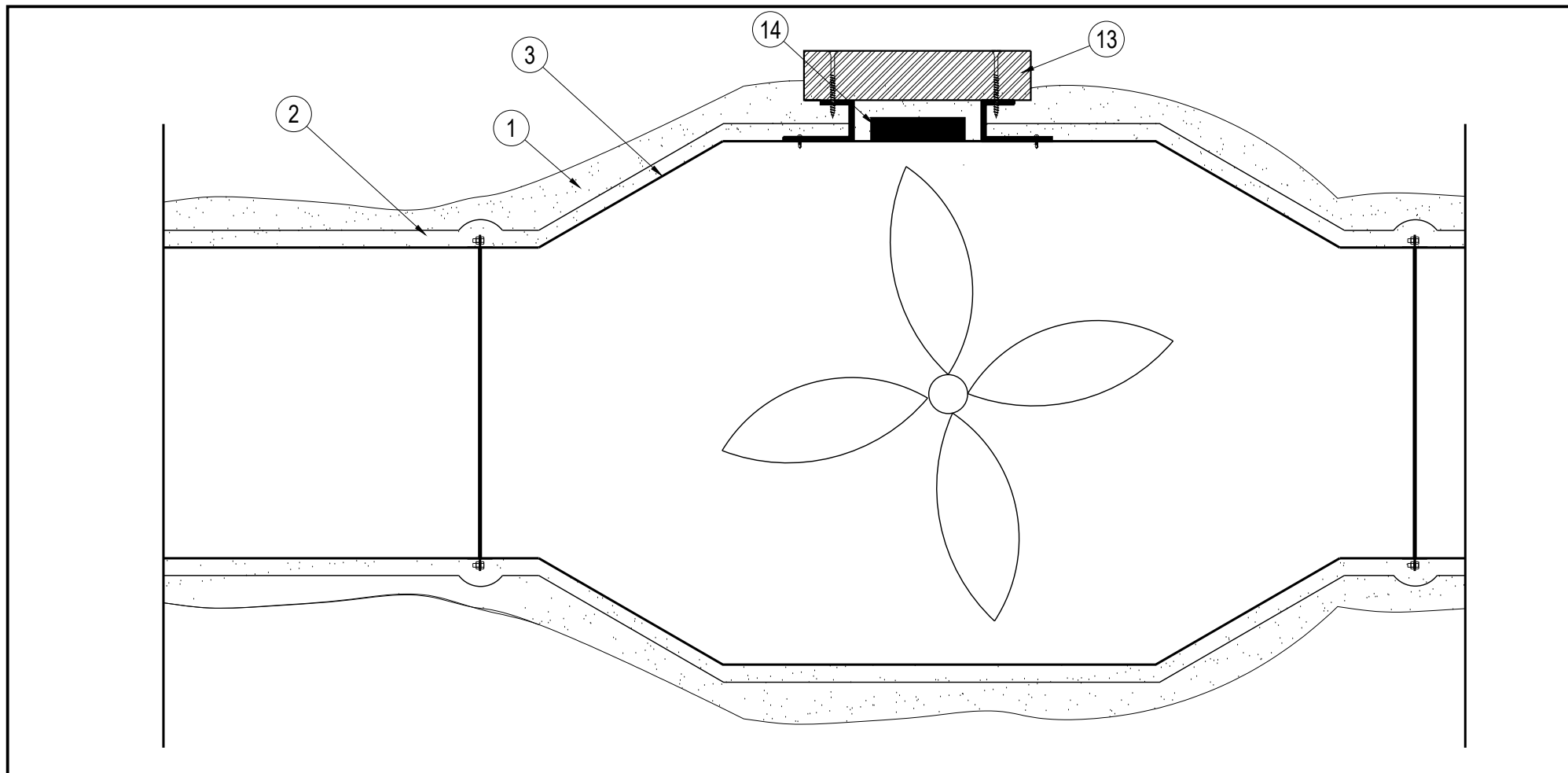


FIG. 1 SECTION VIEW
FAN ENCLOSURE

Drawing / Project Title : CAFCO300 - Duct System Fan Enclosure with Access Panel			Date : 10/5/23	Scale : N.T.S. (mm)	Revision : -	Date : -	No. : -	NOTICE : This information is intended for engineering purposes only and is based on internal & third party testing which we believe to be accurate. The user must determine the suitability of the design to the application and the product to local building codes. Since the user of the product is beyond Promat's control, Promat International (Asia Pacific) Ltd.'s only responsibility shall be to refund or replace materials found to be defective as per our standard warranty.	<div>Promat</div> <div>www.promat.com</div> <div>PROMATAUSTRALIA</div>
			Test Standard : AS 1530: PART 4	Base On Report No. : FAS230196					
Drawing No. : PB185	Sheet No. : 13	Codes : CF-43-12	Drawn By : PB	Checked By : IA	<input checked="" type="checkbox"/> ASSESSMENT DRAWING <input type="checkbox"/> PROJECT DRAWING			NOTE : ALL DIMENSIONS ARE IN MM	

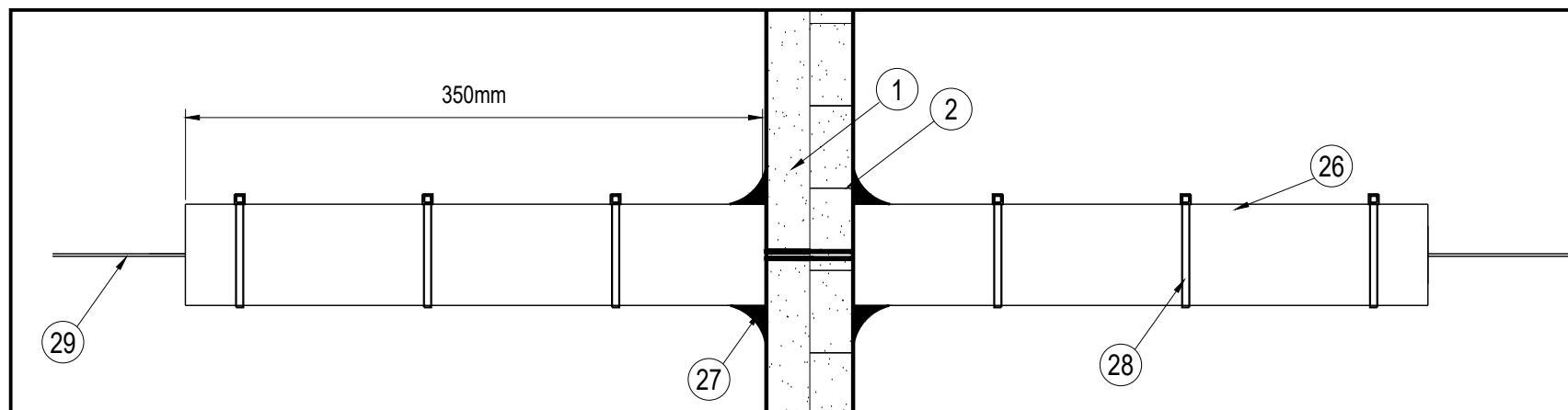


FIG. 2 **SECTION VIEW**
Cable Bundle

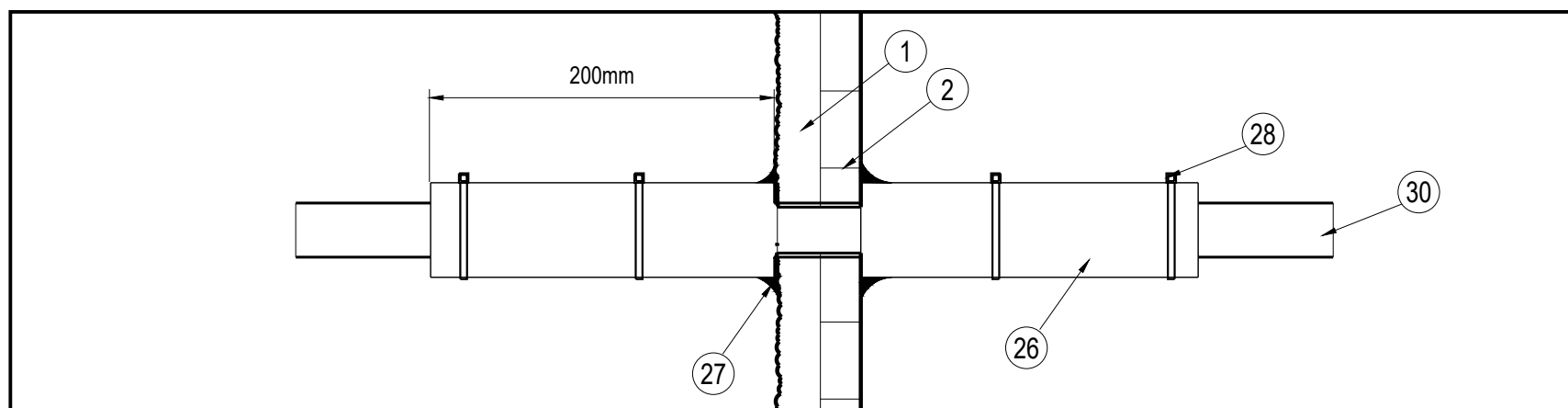
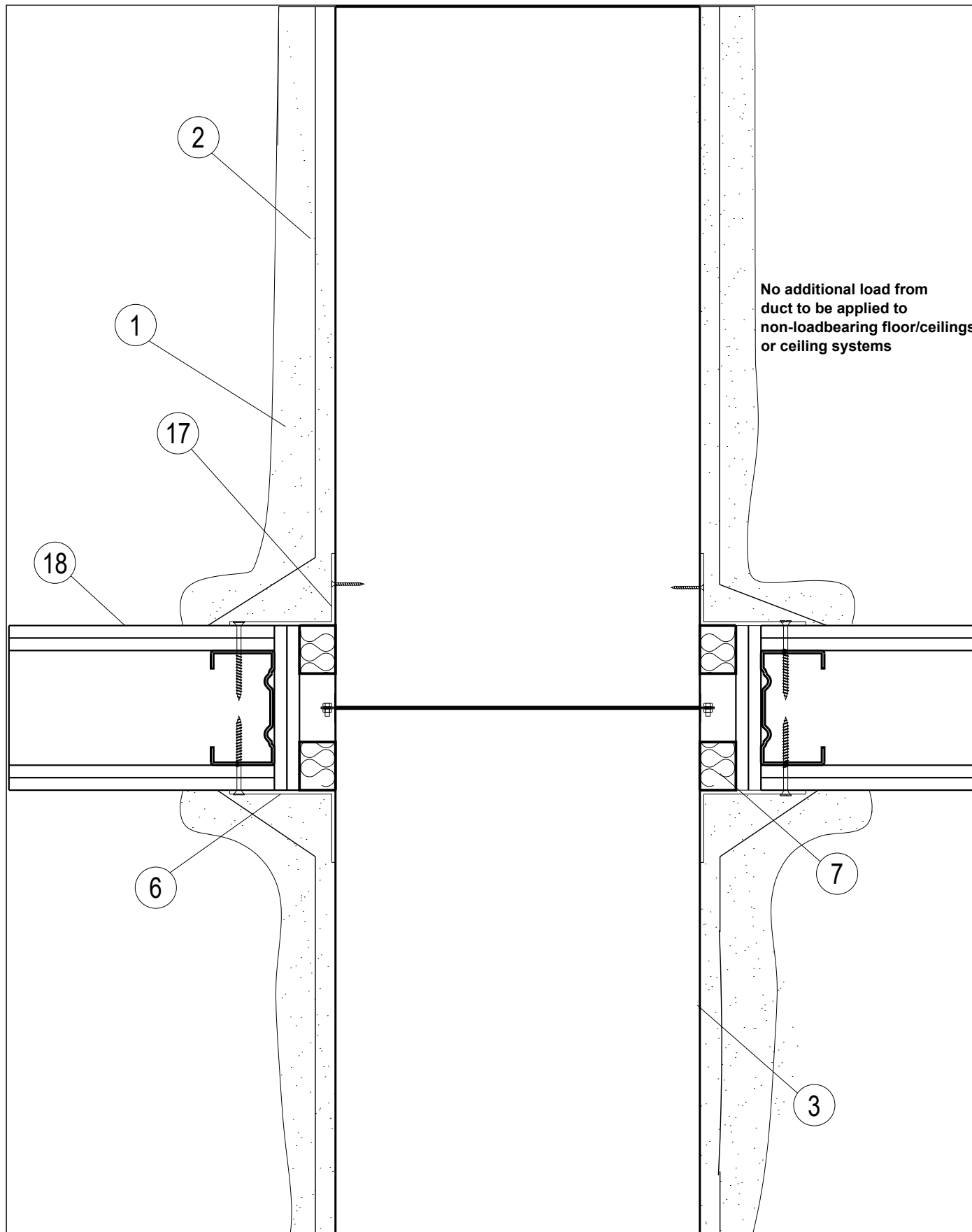

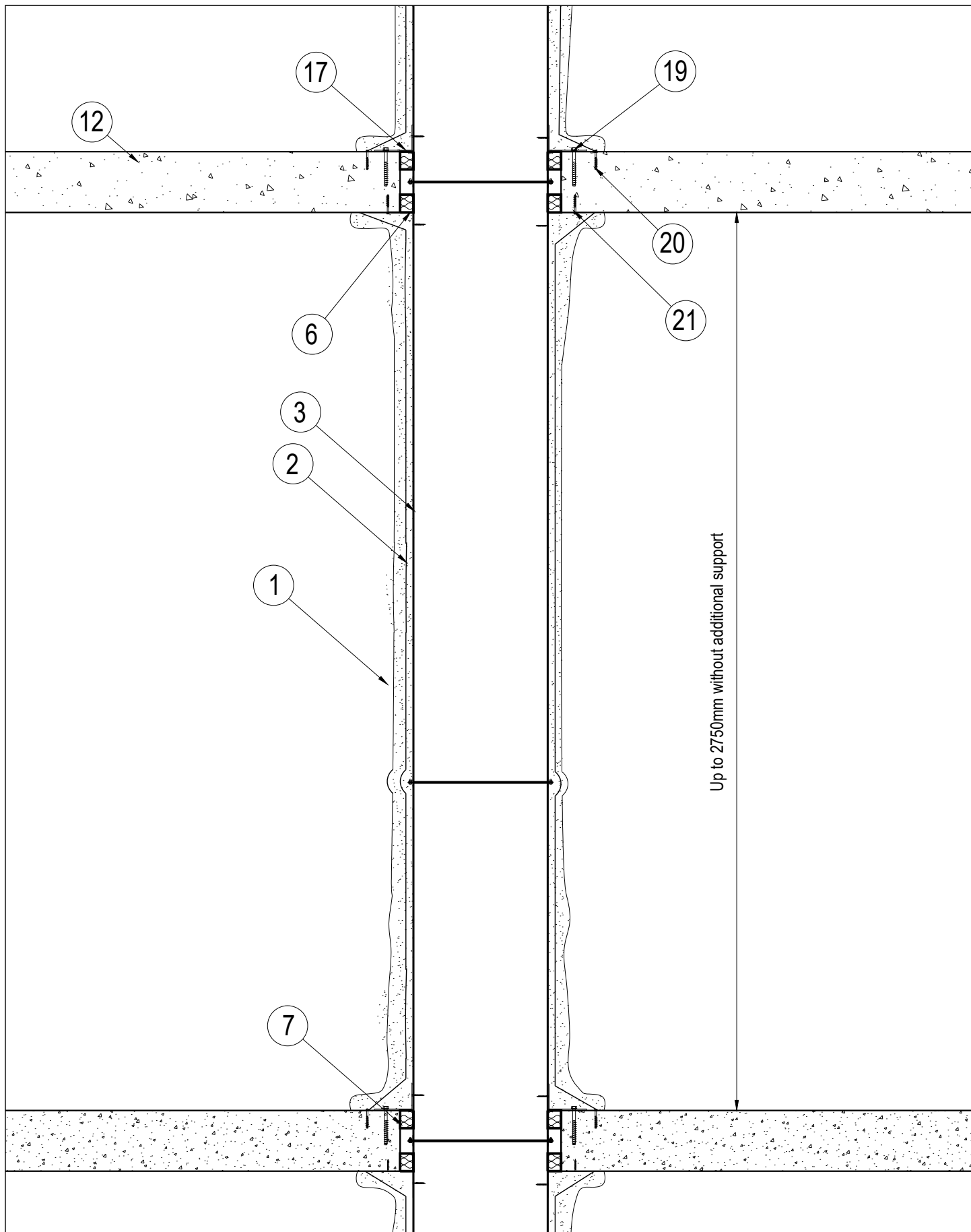


FIG. 3 **SECTION VIEW**
Sprinkler Pipe

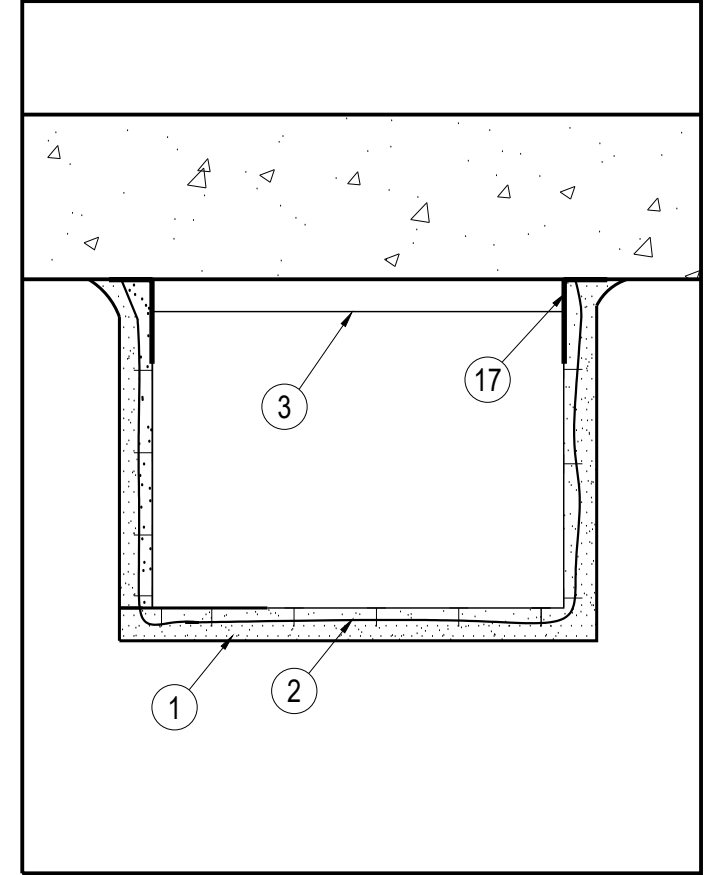
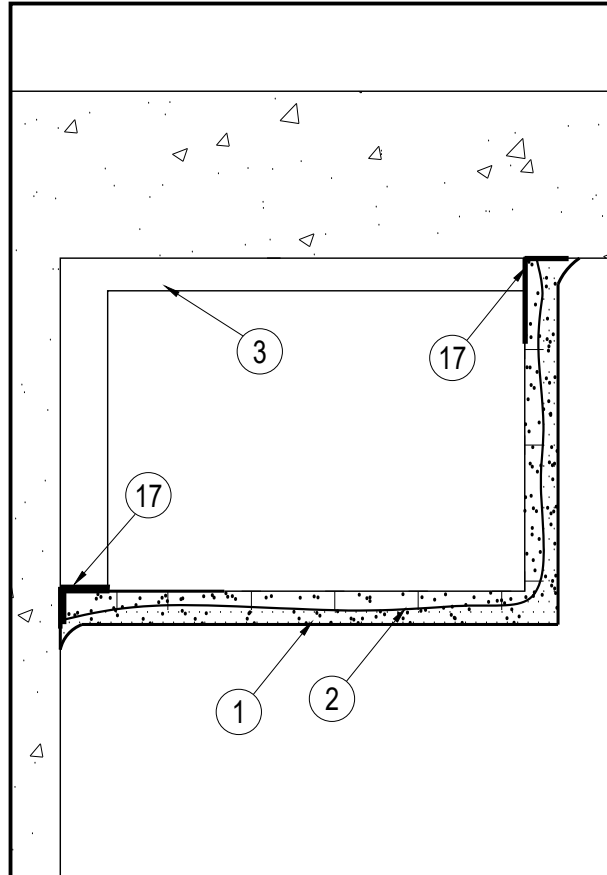
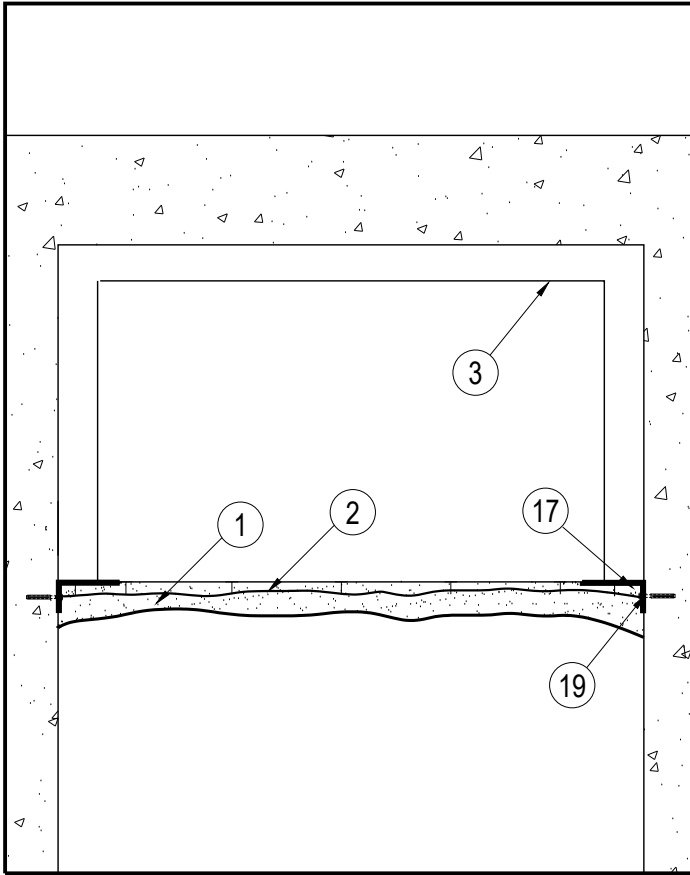
Drawing / Project Title : CAFCO300 - Duct System Service Penetrations			Date : 14/12/23	Scale : N.T.S. (mm)	Revision : -	Date : -	No. : -	NOTICE : This information is intended for engineering purposes only and is based on internal & third party testing which we believe to be accurate. The user must determine the suitability of the design to the application and the product to local building codes. Since the user of the product is beyond Promat's control, Promat International (Asia Pacific) Ltd.'s only responsibility shall be to refund or replace materials found to be defective as per our standard warranty.	<div>Promat</div> <div>www.promat.com</div> <div>PROMATAUSTRALIA</div>
			Test Standard : AS 1530: PART 4	Base On Report No. : FAS230196					
Drawing No. : PB185	Sheet No. : 14	Codes : CF-43-12	Drawn By : PB	Checked By : IA	<input checked="" type="checkbox"/> ASSESSMENT DRAWING <input type="checkbox"/> PROJECT DRAWING			NOTE : ALL DIMENSIONS ARE IN MM	



Drawing / Project Title : CAFCO300 - Duct System Floor/Ceiling or Ceiling Penetration			Date : 09-01-2024	Scale : N.T.S (mm)	Revision : - XXXXX	Date : 01-00-08	No. : A	<div> www.promat.com PROMAT AUSTRALIA</div>
			Test Standard : AS 1530: PART 4	Report/Assessment No.: FAS230196				
Drawing No. : PB185	Sheet No. : 16	Codes : CF43-12	Drawn By : PB	Checked By :	<input type="checkbox"/> TEST DWG. <input checked="" type="checkbox"/> ASSESSMENT DWG.	NOTE : ALL DIMENSIONS ARE IN MM		



Drawing / Project Title : CAFCO300 - Duct System Vertical			Date : 09-01-2024	Scale : N.T.S (mm)	Revision : - XXXXX	Date : 01-00-08	No. : A	<div>Promat</div> <div>www.promat.com</div> <div>PROMAT AUSTRALIA</div>
			Test Standard : AS 1530: PART 4	Report/Assessment No.: FAS230196				
Drawing No. : PB185	Sheet No. : 17	Codes : CF43-12	Drawn By : PB	Checked By :	<input type="checkbox"/> TEST DWG. <input checked="" type="checkbox"/> ASSESSMENT DWG.	NOTE : ALL DIMENSIONS ARE IN MM		



Steel Duct to be supported as per requirements of AS4254

FIG. 1 **PLAN VIEW**
1 SIDED APPLICATION

FIG. 2 **PLAN VIEW**
2 SIDED APPLICATION

FIG. 3 **PLAN VIEW**
3 SIDED APPLICATION

Drawing / Project Title : CAFCO300 - Duct System Pan - 1,2 & 3 Sided Vertical			Date : 10/1/2024	Scale : N.T.S. (mm)	Revision : -	Date : -	No. : -	NOTICE : This information is intended for engineering purposes only and is based on internal & third party testing which we believe to be accurate. The user must determine the suitability of the design to the application and the product to local building codes. Since the user of the product is beyond Promat's control, Promat International (Asia Pacific) Ltd.'s only responsibility shall be to refund or replace materials found to be defective as per our standard warranty.	<div>Promat</div> <div>www.promat.com</div> <div>PROMATAUSTRALIA</div>
			Test Standard : AS 1530: PART 4	Base On Report No. : FAS230196					
			Drawing No. : PB185	Sheet No. : 18	Codes : CF-43-12	Drawn By : PB	Checked By :		