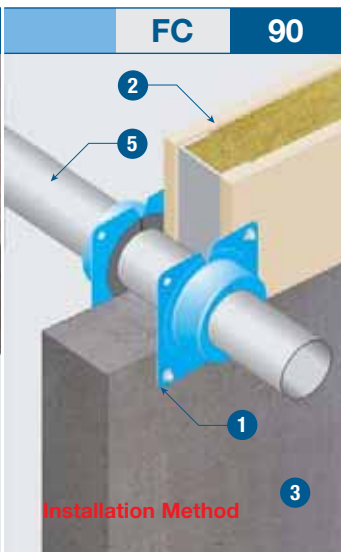
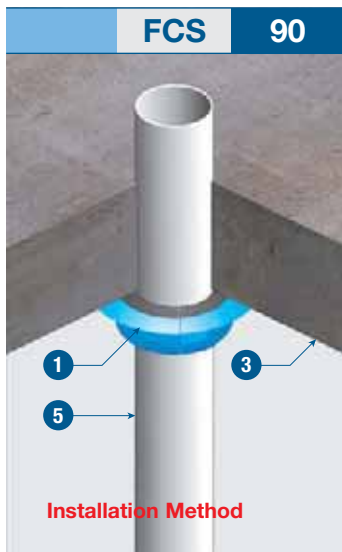


1



### TECHNICAL DATA

Up to 4 hours fire rating, integrity and insulation in accordance with the criteria of AS 1530: Part 4 and AS 4072: Part 1.

- 1 PROMASEAL<sup>®</sup> Retrofit Collar
- 2 Concrete, masonry or other fire rated wall elements
- 3 Concrete floor or wall
- 4 Attachment with suitable anchor i.e. Steel expanding fasteners or laminating screws
- 5 Plastic piping e.g. Polyethylene PE, Polyvinylchloride PVC

### Installation of FCS PROMASEAL<sup>®</sup> Retrofit Collar

FCS PROMASEAL<sup>®</sup> Retrofit Collars are designed to be fitted around installed pipes that pass through floor slabs and have been tested with uPVC, HDPE and ABS pipe in accordance with the criteria of AS 1530: Part 4: 1997 and AS 4072: Part 1, on pipes up to 150mm diameter.

The large opening in the collars will accommodate pipes (and UPVC pipe fittings) that have differing outside diameters and some imported pipe dimensions.

The collars should be unclipped, placed around the pipe, re-clipped and pushed tight to the substrate.

To fix the collars to floor slabs, use minimum 25mm x 6mm steel masonry anchors to all four fixing slots. If the pipes are in cored holes that do not have to be back filled with mortar, it will be necessary to seal between the pipe and cored hole with a nominal 10mm deep bead of PROMASEAL<sup>®</sup> Acrylic Sealant at the soffit of the slab. If the gap is greater than 8mm it must be filled with mortar.

The FCS PROMASEAL<sup>®</sup> Retrofit Collars have been tested for up to 4 hours of FRL in floors with uPVC pipe and ABS pipe, and 3 hours in floors with HDPE pipe (except 100mm which is tested to 4 hours), and on floors and walls for Post Mix drink lines for 2 hours.

For applications on walls for up to 2 hours, use either FC PROMASEAL<sup>®</sup> Retrofit Collars or FCW PROMASEAL<sup>®</sup> Wall Collars.

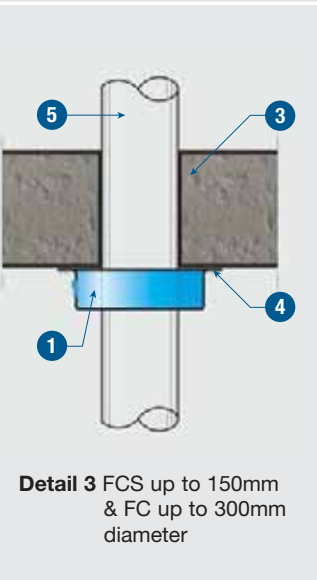
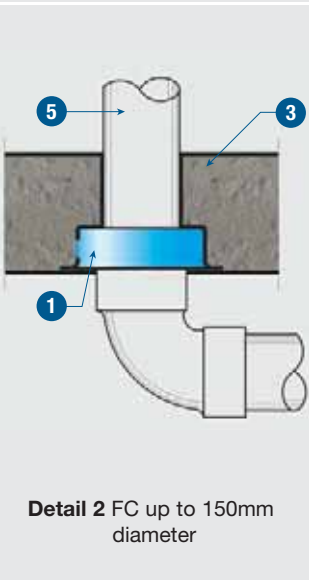
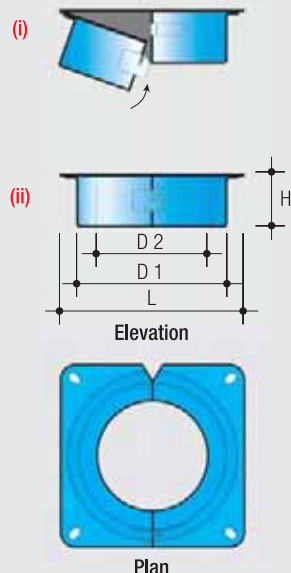
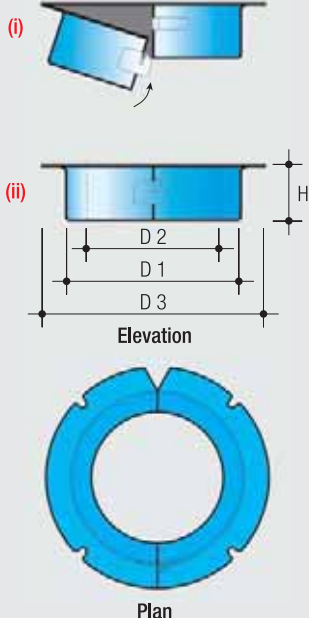
For applications on the underside of ceilings for up to 2 hours, use FC PROMASEAL<sup>®</sup> Retrofit Collars.

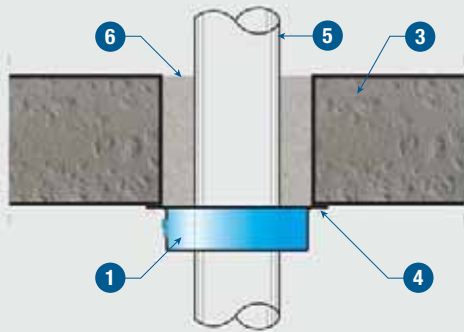
For applications on pipe sizes over 150mm, use FC PROMASEAL<sup>®</sup> Retrofit Collars.

### Dimensions Guide of FCS PROMASEAL<sup>®</sup> Retrofit Collar

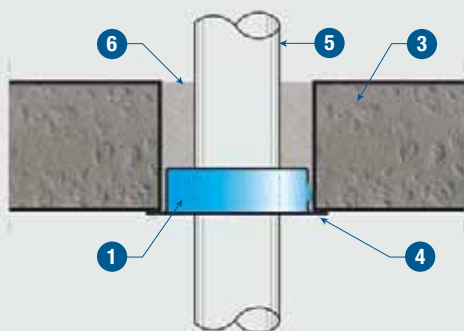
Code No.	uPVC pipe nom. (mm)	HDPE pipe nom. (mm)	ABS pipe nom. (mm)	Body (mm)			Flange (mm)
				H	D 1	D 2	D 3
FCS 40	40	50	40	43	84	56	131
FCS 50	50	56	50	43	98	70	145
FCS 65	65	75		43	113	84	161
FCS 80	80	90	80	43	138	98	186
FCS 100	100	100	100	53	167	127	214
FCS 150	150	150		70	212	172	259

NOTE: The above table measurements apply to floors only.

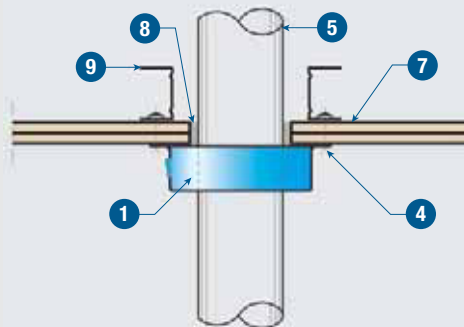




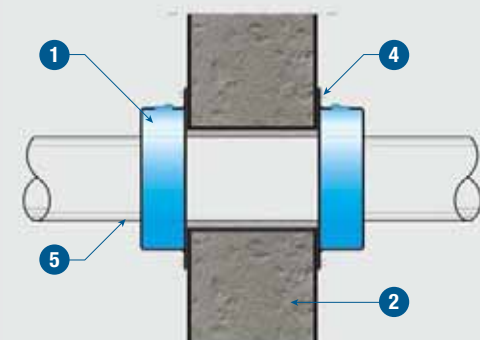
Detail 4 FCS up to 150mm & FC up to 300mm diameter



Detail 5 FC up to 150mm diameter



Detail 6 FC to 150mm diameter for ceilings up to 2 hours



Detail 7 FC up to 300mm diameter

TECHNICAL DATA

Up to 4 hours fire rating, integrity and insulation in accordance with the criteria of AS 1530: Part 4 and AS 4072: Part 1.

- 1 PROMASEAL® Retrofit Collar
- 2 Concrete, masonry or other fire rated wall elements
- 3 Concrete floor
- 4 Attachment with suitable anchor i.e. Steel expanding fasteners or laminating screws
- 5 Plastic piping e.g. Polyethylene PE, Polyvinylchloride PVC
- 6 PROMASEAL® Mortar
- 7 Fire Rated board ceilings
- 8 PROMASEAL® Acrylic Sealant
- 9 Stud at screw position

NOTE: Insulation criteria will vary depending up on the pipe size and type and the building element.

Installation of FC PROMASEAL® Retrofit Collar

The FC PROMASEAL® Retrofit Collar is a multi-purpose collar designed for use with concrete slabs, masonry and lightweight walls and plasterboard ceilings.

The FC PROMASEAL® Retrofit Collar is a split type collar enabling it to be retrofitted when necessary. They are available in a range of sizes to suit up to 315mm OD\*\* plastic pipe. The FC PROMASEAL® Retrofit Collar has been tested for up to 4 hours of FRL in accordance with the criteria of AS 1530: Part 4 and AS 4072 with various types and sizes of plastic pipe.

\*\*It should be noted that the FRL of some of the larger collars is restricted by some types of application, therefore before using any collar with a diameter in excess of 110mm, please consult Promat to ensure the proposed application and requisite FRL can be achieved.

Dimensions Guide of FC PROMASEAL® Retrofit Collar

Code No.	Pipe size nom. (mm)	Body (mm)			Flange (mm)
		H	D 1	D 2	L
FC 40	40	43	77	45	112
FC 50	50	43	90	58	125
FC 65	65	43	103	71	138
FC 80	80	43	123	85	158
FC 100	100	53	150	112	185
FC 125	125	63	165	127	197
FC 150	150	73	200	162	235
FC 200	200	100	264	204	330
FC 225	225	100	290	228	364
FC 250	250	120	316	254	380
FC 300	300	160	402	318	466

NOTE: FC 200 to FC 300 have circular bases.

Please refer to next page for detailed instruction on Details 2~7.