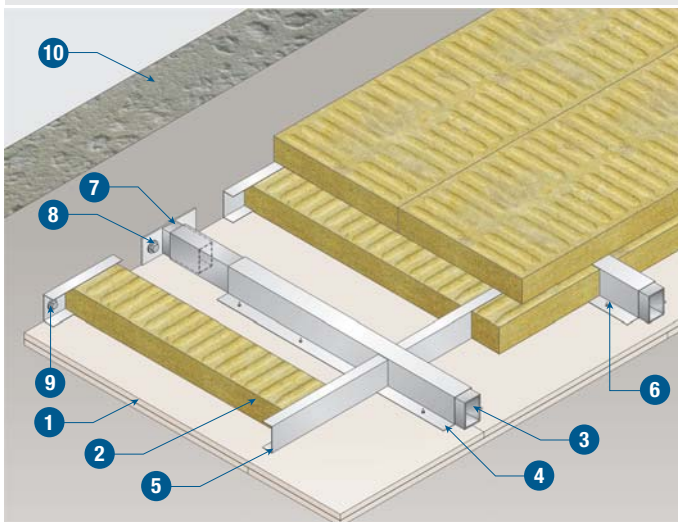
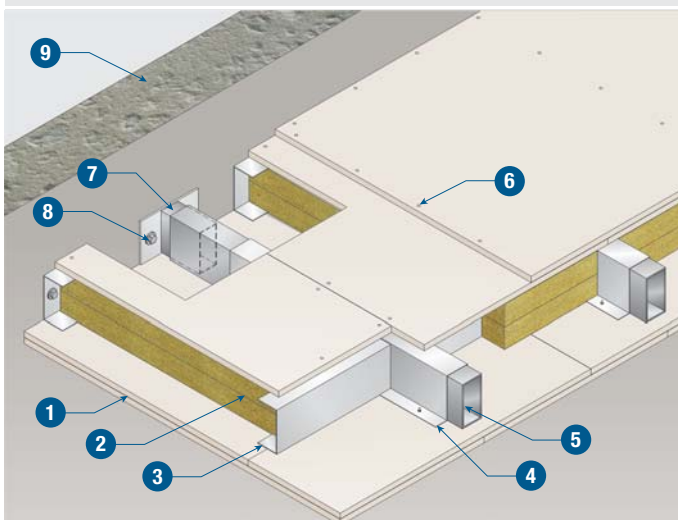


**Installation Method 1**



**Installation Method 2**



**Installation Method 3**

### TECHNICAL DATA

1 hour and 2 hours fire rating, integrity and insulation in accordance with the criteria of BS 476: Part 22 and AS 1530: Part 4 with fire from above or below.

- 1 PROMATECT®-H boards, each side 9mm thick
- 2 PROMATECT®-H strips 100mm x 9mm fixed to either face of framing
- 3 Mineral wool as table below:
 

1 hour fire rating	50mm thick x 40 kg/m <sup>3</sup> density
2 hours fire rating	80mm thick x 100 kg/m <sup>3</sup> density
- 4 Steel hollow sections at 1220mm centres, minimum size 60mm deep x 40mm x 2.5mm up to 2.4m ceiling span. Alternatively, steel channel 100 deep x 50mm x 2mm can be used up to 3m ceiling span. For sizes of steel hollow sections up to 6m ceiling span, please contact Promat for details
- 5 Steel channel 0.5mm thick at 1220mm centres
- 6 M4 self-tapping screws at nominal 200mm centres
- 7 Rolled hollow section welded to steel plate for expansion allowance
- 8 M12 steel anchor bolts fixing hollow section expansion plate
- 9 M6 anchor bolts at 600mm centres
- 10 Concrete wall

### TECHNICAL DATA

1 hour and 2 hours fire rating, integrity and insulation in accordance with the criteria of BS 476: Part 22 and AS 1530: Part 4 with fire from above or below.

- 1 PROMATECT®-H boards, 2 layers of 9mm thick
- 2 Mineral wool as table below:
 

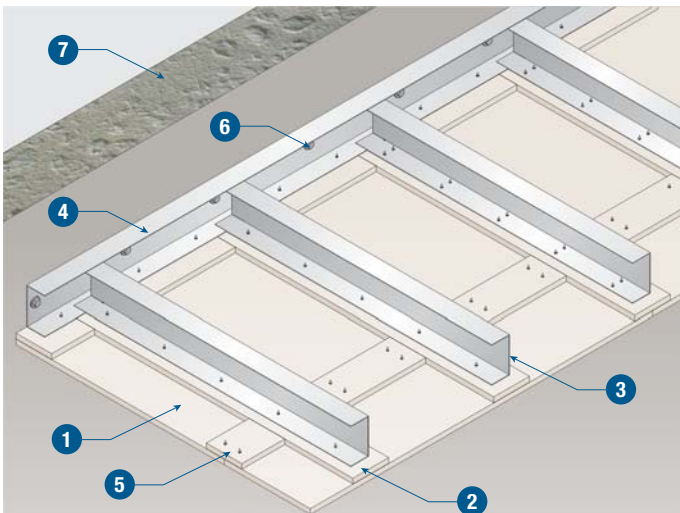
1 hour fire rating	50mm thick x 40 kg/m <sup>3</sup> density
2 hours fire rating	80mm thick x 100 kg/m <sup>3</sup> density
- 3 Steel hollow sections at 1220mm centres, minimum size 60mm deep x 40mm x 2.5mm up to 2.4m ceiling span. Alternatively, steel channel 100 deep x 50mm x 2mm can be used up to 3m ceiling span. For sizes of steel hollow sections up to 6m ceiling span, please contact Promat for details
- 4 Steel top hat sections, minimum 0.5mm thickness
- 5 Steel cross channels 100mm x 50mm x 1.2 thick
- 6 M4 self-tapping screws at nominal 200mm centres
- 7 Rolled hollow section welded to steel plate for expansion allowance
- 8 M12 steel anchor bolts fixing hollow section expansion plate
- 9 M6 anchor bolts at 600mm centres
- 10 Concrete wall

### TECHNICAL DATA

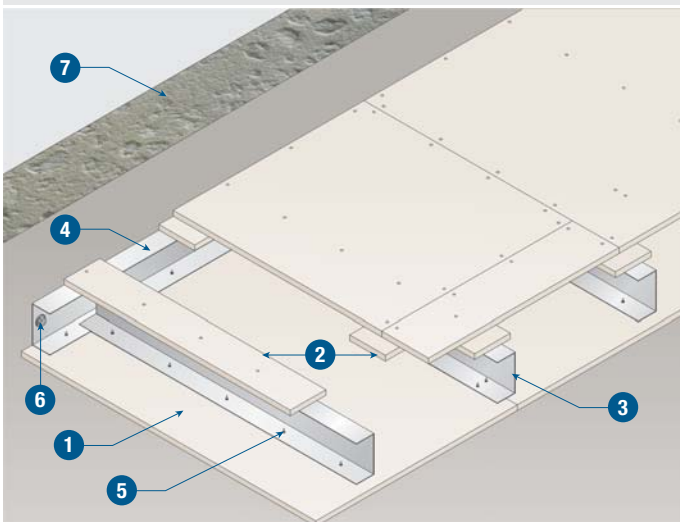
4 hours fire rating, integrity and insulation in accordance with the criteria of BS 476: Part 22 and AS 1530: Part 4 with fire from above or below.

- 1 PROMATECT®-H boards, each side 2 layers of 12mm thick
- 2 Mineral wool raw density  $\geq 100$  kg/m<sup>3</sup>, 100mm thick
- 3 Steel cross channels 100mm x 50mm x 1.2mm thick
- 4 Steel top hat sections, minimum 1.2mm thickness
- 5 Steel hollow sections at 1220mm centres, minimum size 100mm x 50mm x 3mm depending on span of ceiling between party walls. Details are available on request
- 6 M4 self-tapping screws at nominal 200mm centres
- 7 Rolled hollow section welded to steel plate for expansion allowance
- 8 M12 steel anchor bolts fixing hollow section expansion plate
- 9 Concrete wall

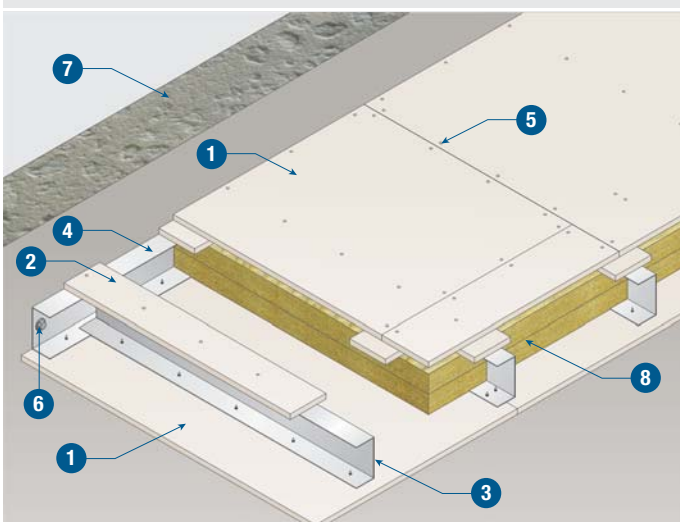
NOTE: Constructions approved for spans up to 6m wide, for details please consult your local Promat technical department.



**Installation Method 4**



**Installation Method 5**



**Installation Method 6**

### TECHNICAL DATA

1/2 hour, 1 hour and 2 hours fire rating, integrity only in accordance with the criteria of BS 476: Part 22 and AS 1530: Part 4 with fire from below.

- 1 PROMATECT®-H boards, 9mm thick
- 2 PROMATECT®-H strips 100mm x 9mm
- 3 C-channel purlins at 600mm centres:

Fire rating	Ceiling span (metre)	Purlin channel (mm)	Perimeter channel (mm)	Expansion allowance (mm)
1 hour	Up to 2.6	C-92 x 34 x 0.8	C-92 x 34 x 1.6	10
1½ hrs	Up to 2.6	C-92 x 34 x 0.8	C-92 x 34 x 1.6	15
2 hours	Up to 2.6	C-92 x 34 x 0.8	C-92 x 34 x 1.6	15
2 hours	4	SHS-100 x 100 x 2.3	C-100 x 50 x 2.3	23

- 4 Perimeter channel support, see the chart above
- 5 No.8 self-tapping screws fixed at 200mm centres on facing board and at 500mm centres on coverstrip to purlins
- 6 M6 expansion bolts at 300mm centres

### TECHNICAL DATA

1/2 hour, 1 hour and 2 hours fire rating, integrity and insulation in accordance with the criteria of BS 476: Part 22 and AS 1530: Part 4 with fire from above.

- 1 PROMATECT®-H boards, 9mm thick
- 2 PROMATECT®-H strips 100mm x 9mm
- 3 C-channel purlins at 600mm centres:

Fire rating	Ceiling span (metre)	Purlin channel (mm)	Perimeter channel (mm)	Expansion allowance (mm)
1 hour	Up to 1.5	C-92 x 34 x 0.8	C-92 x 34 x 1.6	10
1 hour	2.6	C-102 x 50 x 2	C-92 x 34 x 1.6	15
1½ hrs	Up to 1.5	C-92 x 34 x 0.8	C-92 x 34 x 1.6	10
1½ hrs	2.6	C-102 x 50 x 2	C-92 x 34 x 1.6	15
2 hours	1.5	C-92 x 34 x 0.8	C-92 x 34 x 1.6	10
2 hours	2.6	C-102 x 50 x 2	C-105 x 50 x 2	15
1 hour	4	C-92 x 34 x 0.8	C-100 x 50 x 2.3	23

- 4 Perimeter channel support, see the chart above
- 5 No.8 self-tapping screws fixed at 200mm centres on facing board and at 500mm centres on cover strip to purlins
- 6 M6 expansion bolts at 300mm centres
- 7 Concrete or brickwall

Fire rating	Mineral wool Thickness x Density
1/2 hour	Not required
1 hour	2 by 30mm x 60 kg/m <sup>3</sup>
1½ hours	2 by 30mm x 60 kg/m <sup>3</sup> or 2 by 50mm x 50 kg/m <sup>3</sup>
2 & 3 hours	2 by 40mm x 100 kg/m <sup>3</sup> or 2 by 50mm x 80 kg/m <sup>3</sup>

NOTE: For details of constructions for wider spans up to 10m and other fire resistance periods, please consult Promat Technical Department.